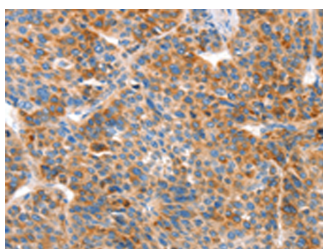


## VTN Polyclonal Antibody

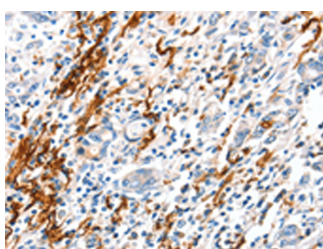
<b>Catalog No.</b>	E-AB-53203	<b>Reactivity</b>	H
<b>Storage</b>	Store at -20°C. Avoid freeze / thaw cycles.	<b>Host</b>	Rabbit
<b>Applications</b>	IHC,ELISA	<b>Isotype</b>	IgG

**Note:** Centrifuge before opening to ensure complete recovery of vial contents.

### Images



Immunohistochemistry of paraffin-embedded Human liver cancer tissue using VTN Polyclonal Antibody at dilution of 1:100(×200)



Immunohistochemistry of paraffin-embedded Human gastric cancer tissue using VTN Polyclonal Antibody at dilution of 1:100(×200)

### Immunogen Information

<b>Immunogen</b>	Synthetic peptide of human VTN
<b>Gene Accession</b>	NP000629
<b>Swissprot</b>	P04004
<b>Synonyms</b>	Complement S Protein,Epibolin,VN,VNT,VTN,VTNC

### Product Information

<b>Buffer</b>	PBS with 0.05% NaN <sub>3</sub> and 40% Glycerol,pH7.4
<b>Purify</b>	Antigen affinity purification
<b>Dilution</b>	IHC 1:100-1:300, ELISA 1:2000-1:20000

### Background

Vitronectin is a glycoprotein present in blood and in the extracellular matrix . Vitronectin is a multifunctional glycoprotein that mediates cell-to-substrate adhesion,inhibits the cytolytic action of the terminal complement cascade in vitro and binds to several serine protease inhibitors of the serpin family .

#### For Research Use Only

Thank you for your recent purchase.  
 If you would like to learn more about antibodies,please visit [www.elabscience.com](http://www.elabscience.com).

**Focus on your research  
 Service for life science**

Applications:WB-Western Blot IHC-Immunohistochemistry IF-Immunofluorescence IP-Immunoprecipitation FC-Flow cytometry ChIP-Chromatin Immunoprecipitation Reactivity: H-Human R-Rat M-Mouse Mk-Monkey Dg-Dog Ch-Chicken Hm-Hamster Rb-Rabbit Sh-Sheep Pg-Pig Z-Zebrafish X-Xenopus C-Cow.