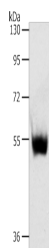


SLC30A6 Polyclonal Antibody

Catalog No.	E-AB-53206	Reactivity	H,M
Storage	Store at -20°C. Avoid freeze / thaw cycles.	Host	Rabbit
Applications	WB,ELISA	Isotype	IgG

Note: Centrifuge before opening to ensure complete recovery of vial contents.

Images



Western blot analysis of Mouse thymus tissue using SLC30A6 Polyclonal Antibody at dilution of 1:223

Immunogen Information

Immunogen	Synthetic peptide of human SLC30A6
Gene Accession	NP060434
Swissprot	Q6NXT4
Synonyms	FLJ31101,MST103,MSTP103,SLC30A6,Zinc transporter like 3,ZnT-6,ZnT6,ZNT6

Product Information

Calculated MW	51 kDa
Observed MW	Refer to figures
Buffer	PBS with 0.05% NaN ₃ and 40% Glycerol,pH7.4
Purify	Antigen affinity purification
Dilution	WB 1:500-1:2000, ELISA 1:1000-1:5000

Background

Zinc functions as a cofactor for numerous enzymes, nuclear factors, and hormones and as an intra- and intercellular signal ion. Members of the zinc transporter (ZNT)/SLC30 subfamily of the cation diffusion facilitator family, such as SLC30A6, permit cellular efflux of zinc.

For Research Use Only

Thank you for your recent purchase.

If you would like to learn more about antibodies, please visit www.elabscience.com.

**Focus on your research
 Service for life science**

Applications:WB-Western Blot IHC-Immunohistochemistry IF-Immunofluorescence IP-Immunoprecipitation FC-Flow cytometry ChIP-Chromatin Immunoprecipitation Reactivity: H-Human R-Rat M-Mouse Mk-Monkey Dg-Dog Ch-Chicken Hm-Hamster Rb-Rabbit Sh-Sheep Pg-Pig Z-Zebrafish X-Xenopus C-Cow.