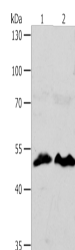


## ZWILCH Polyclonal Antibody

<b>Catalog No.</b>	E-AB-53208	<b>Reactivity</b>	H,M
<b>Storage</b>	Store at -20°C. Avoid freeze / thaw cycles.	<b>Host</b>	Rabbit
<b>Applications</b>	WB,ELISA	<b>Isotype</b>	IgG

**Note:** Centrifuge before opening to ensure complete recovery of vial contents.

### Images



Western blot analysis of HT29 cells  
 HeLa cells using ZWILCH Polyclonal  
 Antibody at dilution of 1:1750

### Immunogen Information

<b>Immunogen</b>	Synthetic peptide of human ZWILCH
<b>Gene Accession</b>	NP060445
<b>Swissprot</b>	Q9H900
<b>Synonyms</b>	FLJ10036,FLJ16343,hZwilch,KNTC1AP,MGC11103 4,Protein zwilch homolog,ZWILC,zwilch

### Product Information

<b>Calculated MW</b>	67 kDa
<b>Observed MW</b>	Refer to figures
<b>Buffer</b>	PBS with 0.05% NaN <sub>3</sub> and 40% Glycerol,pH7.4
<b>Purify</b>	Antigen affinity purification
<b>Dilution</b>	WB 1:1000-1:5000, ELISA 1:2000-1:10000

### Background

This protein is essential component of the mitotic checkpoint, which prevents cells from prematurely exiting mitosis. And it is required for the assembly of the dynein-dynactin and MAD1-MAD2 complexes onto kinetochores. ZWILCH gene is deleted in a patient suffering from colorectal cancer with chromosomal instability.

#### For Research Use Only

Thank you for your recent purchase.

If you would like to learn more about antibodies, please visit [www.elabscience.com](http://www.elabscience.com).

**Focus on your research  
 Service for life science**

Applications:WB-Western Blot IHC-Immunohistochemistry IF-Immunofluorescence IP-Immunoprecipitation FC-Flow cytometry ChIP-  
 Chromatin Immunoprecipitation Reactivity: H-Human R-Rat M-Mouse Mk-Monkey Dg-Dog Ch-Chicken Hm-Hamster Rb-Rabbit Sh-  
 Sheep Pg-Pig Z-Zebrafish X-Xenopus C-Cow.