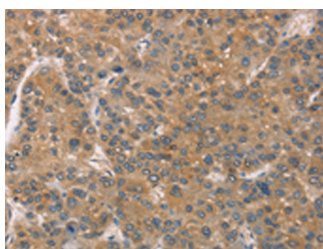


## ZADH2 Polyclonal Antibody

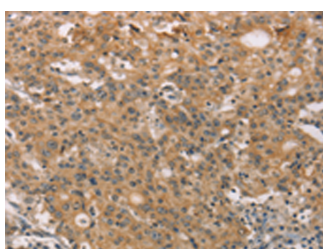
|                     |   |                   |        |
|---------------------|---|-------------------|--------|
| <b>Catalog No.</b>  | E-AB-53215                                  | <b>Reactivity</b> | H,M    |
| <b>Storage</b>      | Store at -20°C. Avoid freeze / thaw cycles. | <b>Host</b>       | Rabbit |
| <b>Applications</b> | IHC,ELISA                                   | <b>Isotype</b>    | IgG    |

**Note:** Centrifuge before opening to ensure complete recovery of vial contents.

### Images



Immunohistochemistry of paraffin-embedded Human liver cancer tissue using ZADH2 Polyclonal Antibody at dilution of 1:51(×200)



Immunohistochemistry of paraffin-embedded Human gastric cancer tissue using ZADH2 Polyclonal Antibody at dilution of 1:51(×200)

### Immunogen Information

|                       |   |
|-----------------------|---|
| <b>Immunogen</b>      | Synthetic peptide of human ZADH2  |
| <b>Gene Accession</b> | NP787103  |
| <b>Swissprot</b>      | Q8N4Q0  |
| <b>Synonyms</b>       | MGC32469,MGC45594,Zinc binding alcohol dehydrogenase domain containing 2,Zinc binding alcohol dehydrogenase domain containing protein 2 |

### Product Information

|                 |  |
|-----------------|--|
| <b>Buffer</b>   | PBS with 0.05% NaN <sub>3</sub> and 40% Glycerol,pH7.4 |
| <b>Purify</b>   | Antigen affinity purification                          |
| <b>Dilution</b> | IHC 1:50-1:200, ELISA 1:2000-1:5000                    |

### Background

ZADH2 (zinc binding alcohol dehydrogenase domain containing 2) is a 377 amino acid protein that belongs to the zinc-containing alcohol dehydrogenase family and is encoded by a gene which maps to human chromosome 18. Chromosome 18 houses over 300 protein-coding genes and contains nearly 76 million bases. There are a variety of diseases associated with defects in chromosome 18-localized genes, some of which include Trisomy 18 (also known as Edwards syndrome), Niemann-Pick disease, hereditary hemorrhagic telangiectasia, erythropoietic protoporphyria and follicular lymphomas.

#### For Research Use Only

Thank you for your recent purchase.  
 If you would like to learn more about antibodies, please visit [www.elabscience.com](http://www.elabscience.com).

**Focus on your research  
 Service for life science**

Applications:WB-Western Blot IHC-Immunohistochemistry IF-Immunofluorescence IP-Immunoprecipitation FC-Flow cytometry ChIP-Chromatin Immunoprecipitation Reactivity: H-Human R-Rat M-Mouse Mk-Monkey Dg-Dog Ch-Chicken Hm-Hamster Rb-Rabbit Sh-Sheep Pg-Pig Z-Zebrafish X-Xenopus C-Cow.