

ZAP70 Polyclonal Antibody

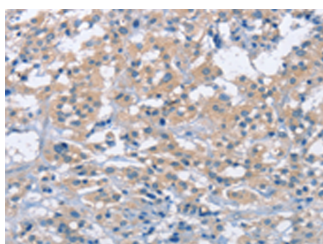
Catalog No.	E-AB-53219	Reactivity	H,M
Storage	Store at -20°C. Avoid freeze / thaw cycles.	Host	Rabbit
Applications	WB,IHC,ELISA	Isotype	IgG

Note: Centrifuge before opening to ensure complete recovery of vial contents.

Images



Western blot analysis of Jurkat cells using ZAP70 Polyclonal Antibody at dilution of 1:1000



Immunohistochemistry of paraffin-embedded Human thyroid cancer tissue using ZAP70 Polyclonal Antibody at dilution of 1:50(x200)

Immunogen Information

Immunogen	Synthetic peptide of human ZAP70
Gene Accession	NP001070
Swissprot	P43403
Synonyms	TZK,ZAP 70,ZAP70,ZAP70,,Zeta chain associated protein kinase 70kDa isoform 2

Product Information

Calculated MW	70 kDa
Observed MW	Refer to figures
Buffer	PBS with 0.05% NaN3 and 40% Glycerol,pH7.4
Purify	Antigen affinity purification
Dilution	WB 1:500-1:2000, IHC 1:25-1:100, ELISA 1:2000-1:5000

Background

Zeta-associated protein (ZAP)-70,a member of the Syk family of tyrosine kinases,plays an important role in T-cell receptor signaling,natural killer (NK) cell activation and early B-cell development. ZAP-70 is expressed in a subset of cases of chronic lymphocytic leukemia/small lymphocytic lymphoma (CLL/SLL) with unmutated immunoglobulin heavy-chain variable region (IgVH) genes and is associated with poor clinical outcome.

For Research Use Only

Thank you for your recent purchase.
 If you would like to learn more about antibodies,please visit www.elabscience.com.

**Focus on your research
 Service for life science**

Applications:WB-Western Blot IHC-Immunohistochemistry IF-Immunofluorescence IP-Immunoprecipitation FC-Flow cytometry ChIP-Chromatin Immunoprecipitation Reactivity: H-Human R-Rat M-Mouse Mk-Monkey Dg-Dog Ch-Chicken Hm-Hamster Rb-Rabbit Sh-Sheep Pg-Pig Z-Zebrafish X-Xenopus C-Cow.