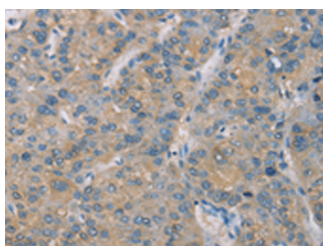


ZBTB6 Polyclonal Antibody

| | | | |
|---------------------|---|-------------------|--------|
| Catalog No. | E-AB-53228 | Reactivity | H,M |
| Storage | Store at -20°C. Avoid freeze / thaw cycles. | Host | Rabbit |
| Applications | IHC,ELISA | Isotype | IgG |

Note: Centrifuge before opening to ensure complete recovery of vial contents.

Images



Immunohistochemistry of paraffin-embedded Human liver cancer tissue using ZBTB6 Polyclonal Antibody at dilution of 1:50(×200)

Immunogen Information

| | |
|-----------------------|---------------------------------------|
| Immunogen | Synthetic peptide of human ZBTB6 |
| Gene Accession | NP006617 |
| Swissprot | Q15916 |
| Synonyms | ZBTB 6,ZBTB6,ZBTB6,ZID,ZNF 482,ZNF482 |

Product Information

| | |
|-----------------|--|
| Buffer | PBS with 0.05% NaN ₃ and 40% Glycerol,pH7.4 |
| Purify | Antigen affinity purification |
| Dilution | IHC 1:50-1:200, ELISA 1:2000-1:5000 |

Background

The ZBTB6 protein contains a conserved N-terminal domain known as the POZ domain that inhibits DNA binding. Sequence analysis predicted that the 424-amino acid protein contains 4 C-terminal zinc finger motifs and an N-terminal domain of 120 amino acids found in many different zinc finger proteins and a group of non-zinc finger poxvirus proteins.

For Research Use Only

Thank you for your recent purchase.
 If you would like to learn more about antibodies, please visit www.elabscience.com.

**Focus on your research
 Service for life science**

Applications:WB-Western Blot IHC-Immunohistochemistry IF-Immunofluorescence IP-Immunoprecipitation FC-Flow cytometry ChIP-Chromatin Immunoprecipitation Reactivity: H-Human R-Rat M-Mouse Mk-Monkey Dg-Dog Ch-Chicken Hm-Hamster Rb-Rabbit Sh-Sheep Pg-Pig Z-Zebrafish X-Xenopus C-Cow.