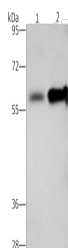


ZBTB7A Polyclonal Antibody

Catalog No.	E-AB-53231	Reactivity	H,M,R
Storage	Store at -20°C. Avoid freeze / thaw cycles.	Host	Rabbit
Applications	WB,ELISA	Isotype	IgG

Note: Centrifuge before opening to ensure complete recovery of vial contents.

Images



Western blot analysis of Hepg2 cells NIH/3T3 cells using ZBTB7A Polyclonal Antibody at dilution of 1:500

Immunogen Information

Immunogen	Synthetic peptide of human ZBTB7A
Gene Accession	NP056982
Swissprot	O95365
Synonyms	DKFZp547O146,TIP21,TTF-I-interacting peptide 21,ZBT7A,ZBTB7,ZBTB7A,ZNF857A

Product Information

Calculated MW	61 kDa
Observed MW	Refer to figures
Buffer	PBS with 0.05% NaN ₃ and 40% Glycerol,pH7.4
Purify	Antigen affinity purification
Dilution	WB 1:500-1:2000, ELISA 1:2000-1:5000

Background

LRF, formerly identified as Pokemon, is a poxvirus zinc finger (POZ) domain-containing transcription factor that influences cell differentiation. LRF (for leukemia/lymphoma related factor) is also known as zinc finger and BTB domain containing 7A, ZBTB7, TIP21, FBI1 and FBI-1. POZ-domain transcription factors contain a POZ or BTB type protein-protein interaction domain at their N-terminus and Kruppel-type zinc fingers at their C-terminus. LRF is inducible during both murine and human preadipocyte differentiation and may contribute to adipogenesis through influencing the switch from cellular proliferation to terminal differentiation.

For Research Use Only

Thank you for your recent purchase.
 If you would like to learn more about antibodies, please visit www.elabscience.com.

**Focus on your research
 Service for life science**

Applications:WB-Western Blot IHC-Immunohistochemistry IF-Immunofluorescence IP-Immunoprecipitation FC-Flow cytometry ChIP-Chromatin Immunoprecipitation Reactivity: H-Human R-Rat M-Mouse Mk-Monkey Dg-Dog Ch-Chicken Hm-Hamster Rb-Rabbit Sh-Sheep Pg-Pig Z-Zebrafish X-Xenopus C-Cow.