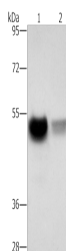


## CREBZF Polyclonal Antibody

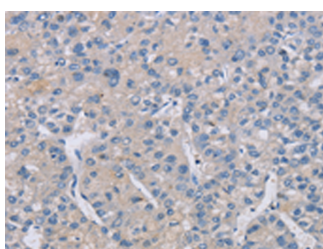
<b>Catalog No.</b>	E-AB-53232	<b>Reactivity</b>	H,M
<b>Storage</b>	Store at -20°C. Avoid freeze / thaw cycles.	<b>Host</b>	Rabbit
<b>Applications</b>	WB,IHC,ELISA	<b>Isotype</b>	IgG

**Note:** Centrifuge before opening to ensure complete recovery of vial contents.

### Images



Western blot analysis of Mouse brain tissue PC3 cells using CREBZF Polyclonal Antibody at dilution of 1:500



Immunohistochemistry of paraffin-embedded Human liver cancer tissue using CREBZF Polyclonal Antibody at dilution of 1:50(×200)

### Immunogen Information

<b>Immunogen</b>	Synthetic peptide of human CREBZF
<b>Gene Accession</b>	NP001034707
<b>Swissprot</b>	Q9NS37
<b>Synonyms</b>	AI225749,AI606244,CREB/ATF bZIP transcription factor,Crebzf,FLJ94018,SMILE,ZF,ZHANG

### Product Information

<b>Calculated MW</b>	37 kDa
<b>Observed MW</b>	Refer to figures
<b>Buffer</b>	PBS with 0.05% NaN <sub>3</sub> and 40% Glycerol,pH7.4
<b>Purify</b>	Antigen affinity purification
<b>Dilution</b>	WB 1:500-1:2000, IHC 1:25-1:100, ELISA 1:2000-1:5000

### Background

Host cell factor (HCF) is a cellular cofactor required for the activation of VP16 which expresses the herpes simplex virus immediate early gene. VP16 binds to HCF through a 4-amino acid motif similar to the HCF binding domain of the basic leucine-zipper proteins Luman and Zhangfei (ZF). Luman activates promoters containing cAMP or unfolded protein response elements (UPRE). Zhangfei suppresses the transcriptional activity of Luman, but requires HCF binding which may target Luman and Zhangfei to a common location. Sequence analysis predicts that the deduced 272-amino acid Zhangfei protein has a negatively charged N terminus, a leucine zipper of 6 heptad leucine repeats separated by a conserved 6-amino acid spacer, a basic domain, and a bZIP region. It is also presumed that the N-terminal acidic region of Zhangfei is an activation domain.

### For Research Use Only

Thank you for your recent purchase.  
 If you would like to learn more about antibodies, please visit [www.elabscience.com](http://www.elabscience.com).

**Focus on your research**  
**Service for life science**

Applications:WB-Western Blot IHC-Immunohistochemistry IF-Immunofluorescence IP-Immunoprecipitation FC-Flow cytometry ChIP-Chromatin Immunoprecipitation Reactivity: H-Human R-Rat M-Mouse Mk-Monkey Dg-Dog Ch-Chicken Hm-Hamster Rb-Rabbit Sh-Sheep Pg-Pig Z-Zebrafish X-Xenopus C-Cow.