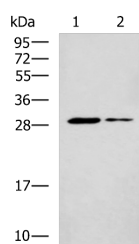


## POMC Polyclonal Antibody

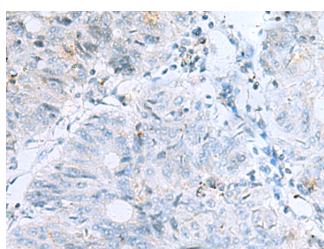
<b>Catalog No.</b>	E-AB-53251	<b>Reactivity</b>	H, M, R
<b>Storage</b>	Store at -20°C. Avoid freeze / thaw cycles.	<b>Host</b>	Rabbit
<b>Applications</b>	WB,IHC,ELISA	<b>Isotype</b>	IgG

**Note:** Centrifuge before opening to ensure complete recovery of vial contents.

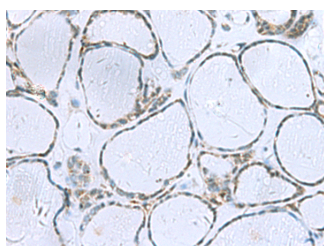
### Images



Western blot analysis of Mouse liver tissue and Mouse skeletal muscle tissue lysates using POMC Polyclonal Antibody at dilution of 1:800



Immunohistochemistry of paraffin-embedded Human colorectal cancer tissue using POMC Polyclonal Antibody at dilution of 1:35(×200)



Immunohistochemistry of paraffin-embedded Human thyroid cancer tissue using POMC Polyclonal Antibody at dilution of 1:35(×200)

### Immunogen Information

<b>Immunogen</b>	Synthetic peptide of human POMC
<b>Gene Accession</b>	NP000930
<b>Swissprot</b>	P01189
<b>Synonyms</b>	MSH,NPP,POC,POMC,Pomc-1,Pomc1,Pomc2,Pro ACTH endorphin,Tetracosactide

### Product Information

<b>Calculated MW</b>	29 kDa
<b>Observed MW</b>	Refer to figures
<b>Buffer</b>	PBS with 0.05% NaN <sub>3</sub> and 40% Glycerol,pH7.4
<b>Purify</b>	Antigen affinity purification
<b>Dilution</b>	WB 1:500-1:2000, IHC 1:25-1:50, ELISA 1:5000-1:10000

### Background

Pro-opiomelanocortin (POMC) is a prohormone that encodes multiple smaller peptide hormones within its structure. POMC plays important roles in many pathological and physiological processes, including regulating energy metabolism, immune reactions, and sexual functions. POMC expression differs quantitatively and qualitatively among most normal tissues. The large molecule of POMC is the source of several important biologically active substances. POMC can be cleaved enzymatically into the following peptides: d NPP,  $\gamma$ -MSH, ACTH,  $\alpha$ -MSH, CLIP, Lipotropin  $\beta$ , Lipotropin  $\gamma$ ,  $\beta$ -MSH,  $\beta$  endorphin and Met-enkephalin.

### For Research Use Only

Thank you for your recent purchase.  
 If you would like to learn more about antibodies, please visit [www.elabscience.com](http://www.elabscience.com).

**Focus on your research**  
**Service for life science**

Applications:WB-Western Blot IHC-Immunohistochemistry IF-Immunofluorescence IP-Immunoprecipitation FC-Flow cytometry ChIP-Chromatin Immunoprecipitation Reactivity: H-Human R-Rat M-Mouse Mk-Monkey Dg-Dog Ch-Chicken Hm-Hamster Rb-Rabbit Sh-Sheep Pg-Pig Z-Zebrafish X-Xenopus C-Cow.