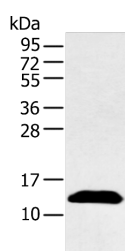


## PPBP Polyclonal Antibody

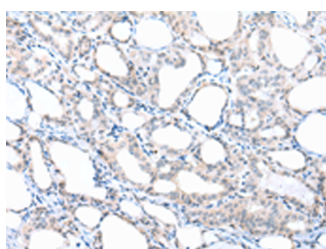
<b>Catalog No.</b>	E-AB-53254	<b>Reactivity</b>	H
<b>Storage</b>	Store at -20°C. Avoid freeze / thaw cycles.	<b>Host</b>	Rabbit
<b>Applications</b>	WB,IHC,ELISA	<b>Isotype</b>	IgG

**Note:** Centrifuge before opening to ensure complete recovery of vial contents.

### Images



Western blot analysis of Human plasma solution using PPBP Polyclonal Antibody at dilution of 1:500



Immunohistochemistry of paraffin-embedded Human thyroid cancer tissue using PPBP Polyclonal Antibody at dilution of 1:30(×200)

### Immunogen Information

<b>Immunogen</b>	Synthetic peptide of human PPBP
<b>Gene Accession</b>	NP002695
<b>Swissprot</b>	P02775
<b>Synonyms</b>	B TG1,Beta TG,MDGF,NAP 2,NAP-2,TC1,TC2,TG B,TGB1,THBGB,THBGB1,Thrombocidin 1,Thrombocidin 2

### Product Information

<b>Calculated MW</b>	14 kDa
<b>Observed MW</b>	Refer to figures
<b>Buffer</b>	PBS with 0.05% NaN <sub>3</sub> and 40% Glycerol,pH7.4
<b>Purify</b>	Antigen affinity purification
<b>Dilution</b>	WB 1:1000-1:5000, IHC 1:25-1:100, ELISA 1:2000-1:10000

### Background

PPBP (Pro-Platelet Basic Protein) is a Protein Coding gene. Diseases associated with PPBP include Erythromelalgia and Colloid Adenoma. Among its related pathways are GPCR Pathway and Peptide ligand-binding receptors. GO annotations related to this gene include growth factor activity and glucose transmembrane transporter activity. An important paralog of this gene is CXCL1. The protein encoded by this gene is a platelet-derived growth factor that belongs to the CXC chemokine family. This growth factor is a potent chemoattractant and activator of neutrophils. It has been shown to stimulate various cellular processes including DNA synthesis, mitosis, glycolysis, intracellular cAMP accumulation, prostaglandin E2 secretion, and synthesis of hyaluronic acid and sulfated glycosaminoglycan. It also stimulates the formation and secretion of plasminogen activator by synovial cells. The protein also is an antimicrobial protein with bactericidal and antifungal activity.

#### For Research Use Only

Thank you for your recent purchase.  
 If you would like to learn more about antibodies, please visit [www.elabscience.com](http://www.elabscience.com).

**Focus on your research  
 Service for life science**

Applications:WB-Western Blot IHC-Immunohistochemistry IF-Immunofluorescence IP-Immunoprecipitation FC-Flow cytometry ChIP-Chromatin Immunoprecipitation Reactivity: H-Human R-Rat M-Mouse Mk-Monkey Dg-Dog Ch-Chicken Hm-Hamster Rb-Rabbit Sh-Sheep Pg-Pig Z-Zebrafish X-Xenopus C-Cow.