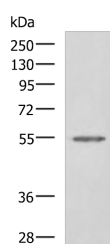


## SLC16A1 Polyclonal Antibody

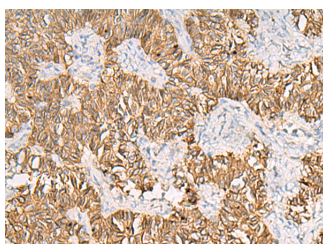
<b>Catalog No.</b>	E-AB-53264	<b>Reactivity</b>	H
<b>Storage</b>	Store at -20°C. Avoid freeze / thaw cycles.	<b>Host</b>	Rabbit
<b>Applications</b>	WB,IHC,ELISA	<b>Isotype</b>	IgG

**Note:** Centrifuge before opening to ensure complete recovery of vial contents.

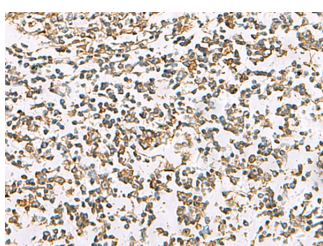
### Images



Western blot analysis of Jurkat cell lysate using SLC16A1 Polyclonal Antibody at dilution of 1:550



Immunohistochemistry of paraffin-embedded Human ovarian cancer tissue using SLC16A1 Polyclonal Antibody at dilution of 1:30(x200)



Immunohistochemistry of paraffin-embedded Human tonsil tissue using SLC16A1 Polyclonal Antibody at dilution of 1:30(x200)

### Immunogen Information

<b>Immunogen</b>	Synthetic peptide of human SLC16A1
<b>Gene Accession</b>	NP001159968
<b>Swissprot</b>	P53985
<b>Synonyms</b>	FLJ36745,HHF7,MCT 1,MCT,MGC44475,MOT1,Slc16a1,SLC16A1 protein

### Product Information

<b>Calculated MW</b>	54 kDa
<b>Observed MW</b>	Refer to figures
<b>Buffer</b>	PBS with 0.05% NaN3 and 40% Glycerol,pH7.4
<b>Purify</b>	Antigen affinity purification
<b>Dilution</b>	WB 1:500-1:2000, IHC 1:50-1:100, ELISA 1:5000-1:10000

### Background

The protein encoded by this gene is a proton-linked monocarboxylate transporter that catalyzes the movement of many monocarboxylates, such as lactate and pyruvate, across the plasma membrane. Mutations in this gene are associated with erythrocyte lactate transporter defect. Alternatively spliced transcript variants have been found for this gene.

#### For Research Use Only

Thank you for your recent purchase.  
 If you would like to learn more about antibodies, please visit [www.elabscience.com](http://www.elabscience.com).

**Focus on your research  
 Service for life science**

Applications:WB-Western Blot IHC-Immunohistochemistry IF-Immunofluorescence IP-Immunoprecipitation FC-Flow cytometry ChIP-Chromatin Immunoprecipitation Reactivity: H-Human R-Rat M-Mouse Mk-Monkey Dg-Dog Ch-Chicken Hm-Hamster Rb-Rabbit Sh-Sheep Pg-Pig Z-Zebrafish X-Xenopus C-Cow.