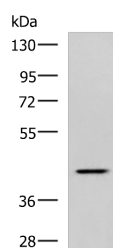


SYT2 Polyclonal Antibody

Catalog No.	E-AB-53274	Reactivity	H,M,R
Storage	Store at -20°C. Avoid freeze / thaw cycles.	Host	Rabbit
Applications	WB,ELISA	Isotype	IgG

Note: Centrifuge before opening to ensure complete recovery of vial contents.

Images



Western blot analysis of HeLa cell lysate using SYT2 Polyclonal Antibody at dilution of 1:800

Immunogen Information

Immunogen	Synthetic peptide of human SYT2
Gene Accession	NP001129976
Swissprot	Q8N9I0
Synonyms	Synaptotagmin 2,Synaptotagmin II,Synaptotagmin-2,Synaptotagmin2,SynaptotagminII,SYT 2,Syt II,Syt2,SYT2,SytII

Product Information

Calculated MW	47 kDa
Observed MW	Refer to figures
Buffer	PBS with 0.05% NaN ₃ and 40% Glycerol,pH7.4
Purify	Antigen affinity purification
Dilution	WB 1:500-1:2000, ELISA 1:5000-1:10000

Background

This gene encodes a synaptic vesicle membrane protein. The encoded protein is thought to function as a calcium sensor in vesicular trafficking and exocytosis. Mutations in this gene are associated with myasthenic syndrome, presynaptic, congenital, with or without motor neuropathy. Alternative splicing results in multiple transcript variants.

For Research Use Only

Thank you for your recent purchase.
 If you would like to learn more about antibodies, please visit www.elabscience.com.

**Focus on your research
 Service for life science**

Applications:WB-Western Blot IHC-Immunohistochemistry IF-Immunofluorescence IP-Immunoprecipitation FC-Flow cytometry ChIP-Chromatin Immunoprecipitation Reactivity: H-Human R-Rat M-Mouse Mk-Monkey Dg-Dog Ch-Chicken Hm-Hamster Rb-Rabbit Sh-Sheep Pg-Pig Z-Zebrafish X-Xenopus C-Cow.