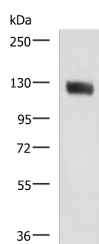


## MCAM Polyclonal Antibody

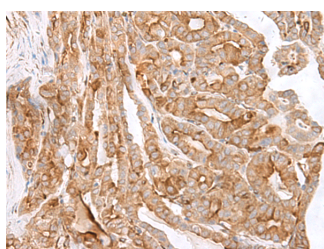
<b>Catalog No.</b>	E-AB-53284	<b>Reactivity</b>	H
<b>Storage</b>	Store at -20°C. Avoid freeze / thaw cycles.	<b>Host</b>	Rabbit
<b>Applications</b>	WB,IHC,ELISA	<b>Isotype</b>	IgG

**Note:** Centrifuge before opening to ensure complete recovery of vial contents.

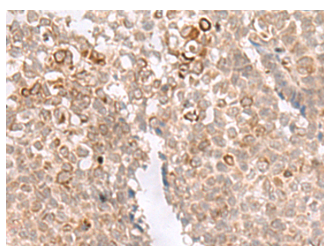
### Images



Western blot analysis of Human leiomyosarcoma tissue lysate using MCAM Polyclonal Antibody at dilution of 1:400



Immunohistochemistry of paraffin-embedded Human thyroid cancer tissue using MCAM Polyclonal Antibody at dilution of 1:40(×200)



Immunohistochemistry of paraffin-embedded Human ovarian cancer tissue using MCAM Polyclonal Antibody at dilution of 1:40(×200)

### Immunogen Information

<b>Immunogen</b>	Synthetic peptide of human MCAM
<b>Gene Accession</b>	NP006491
<b>Swissprot</b>	P43121
<b>Synonyms</b>	A32 antigen,CD 146,CD146,CD146 antigen,MelCAM,MUC 18,MUC18,MUC18,S endo 1

### Product Information

<b>Calculated MW</b>	72 kDa
<b>Observed MW</b>	Refer to figures
<b>Buffer</b>	PBS with 0.05% NaN <sub>3</sub> and 40% Glycerol,pH7.4
<b>Purify</b>	Antigen affinity purification
<b>Dilution</b>	WB 1:500-1:2000, IHC 1:40-1:200, ELISA 1:5000-1:10000

### Background

CD146,also known as melanoma cell adhesion molecule (MCAM) or MUC18,originally identified as a biomarker of melanoma progression,is a transmembrane glycoprotein belonging to the immunoglobulin (Ig) superfamily . Structurally,it consists of five Ig domains,a transmembrane domain,and a cytoplasmic region. In normal adult tissue,CD146 is primarily expressed by vascular endothelium and smooth muscle. CD146 is a key cell adhesion protein in vascular endothelial cell activity and angiogenesis,and has been used as marker of circulating endothelium cells (CECs) .

### For Research Use Only

Thank you for your recent purchase.  
 If you would like to learn more about antibodies,please visit [www.elabscience.com](http://www.elabscience.com).

**Focus on your research**  
**Service for life science**

Applications:WB-Western Blot IHC-Immunohistochemistry IF-Immunofluorescence IP-Immunoprecipitation FC-Flow cytometry ChIP-Chromatin Immunoprecipitation Reactivity: H-Human R-Rat M-Mouse Mk-Monkey Dg-Dog Ch-Chicken Hm-Hamster Rb-Rabbit Sh-Sheep Pg-Pig Z-Zebrafish X-Xenopus C-Cow.