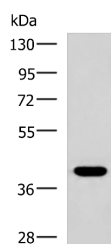


PLPPR5 Polyclonal Antibody

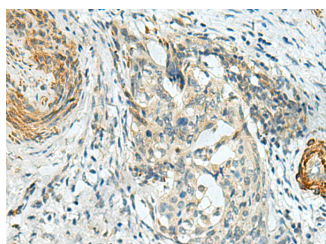
Catalog No.	E-AB-53287	Reactivity	H,M
Storage	Store at -20°C. Avoid freeze / thaw cycles.	Host	Rabbit
Applications	WB,IHC,ELISA	Isotype	IgG

Note: Centrifuge before opening to ensure complete recovery of vial contents.

Images



Western blot analysis of HepG2 cell lysate using PLPPR5 Polyclonal Antibody at dilution of 1:1500



Immunohistochemistry of paraffin-embedded Human cervical cancer tissue using PLPPR5 Polyclonal Antibody at dilution of 1:120(×200)

Immunogen Information

Immunogen	Synthetic peptide of human PLPPR5
Gene Accession	NP001010861
Swissprot	Q32ZL2
Synonyms	lppr5,LPPR5,PAP2,Plasticity-related gene 5 protein,PRG 5,PRG-5,PRG5

Product Information

Calculated MW	36 kDa
Observed MW	Refer to figures
Buffer	PBS with 0.05% NaN3 and 40% Glycerol,pH7.4
Purify	Antigen affinity purification
Dilution	WB 1:1000-1:5000, IHC 1:100-1:200, ELISA 1:5000-1:10000

Background

The protein encoded by this gene is a type 2 member of the phosphatidic acid phosphatase (PAP) family. All type 2 members of this protein family contain 6 transmembrane regions, and a consensus N-glycosylation site. PAPs convert phosphatidic acid to diacylglycerol, and function in de novo synthesis of glycerolipids as well as in receptor-activated signal transduction mediated by phospholipase D. Alternate transcriptional splice variants, encoding different isoforms, have been characterized.

For Research Use Only

Thank you for your recent purchase.
 If you would like to learn more about antibodies, please visit www.elabscience.com.

**Focus on your research
 Service for life science**

Applications:WB-Western Blot IHC-Immunohistochemistry IF-Immunofluorescence IP-Immunoprecipitation FC-Flow cytometry ChIP-Chromatin Immunoprecipitation Reactivity: H-Human R-Rat M-Mouse Mk-Monkey Dg-Dog Ch-Chicken Hm-Hamster Rb-Rabbit Sh-Sheep Pg-Pig Z-Zebrafish X-Xenopus C-Cow.