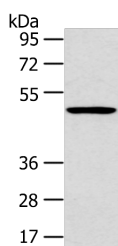


HTRA1 Polyclonal Antibody

Catalog No.	E-AB-53300	Reactivity	H,M,R
Storage	Store at -20°C. Avoid freeze / thaw cycles.	Host	Rabbit
Applications	WB,IHC,ELISA	Isotype	IgG

Note: Centrifuge before opening to ensure complete recovery of vial contents.

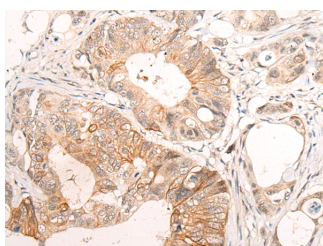
Images



Western blot analysis of 231 cell using HTRA1 Polyclonal Antibody at dilution of 1:500



Immunohistochemistry of paraffin-embedded Human brain tissue using HTRA1 Polyclonal Antibody at dilution of 1:55(x200)



Immunohistochemistry of paraffin-embedded Human colorectal cancer tissue using HTRA1 Polyclonal Antibody at dilution of 1:55(x200)

Immunogen Information

Immunogen	Synthetic peptide of human HTRA1
Gene Accession	NP002766
Swissprot	Q92743
Synonyms	ARMD7,CARASIL,HtrA,HTRA1,HTRA1,PRSS11,Serine protease HTRA1 precursor

Product Information

Calculated MW	51 kDa
Observed MW	Refer to figures
Buffer	PBS with 0.05% NaN3 and 40% Glycerol,pH7.4
Purify	Antigen affinity purification
Dilution	WB 1:500-1:2000, IHC 1:40-1:200, ELISA 1:5000-1:10000

Background

This gene encodes a member of the trypsin family of serine proteases. This protein is a secreted enzyme that is proposed to regulate the availability of insulin-like growth factors (IGFs) by cleaving IGF-binding proteins. It has also been suggested to be a regulator of cell growth. Variations in the promoter region of this gene are the cause of susceptibility to age-related macular degeneration type 7.

For Research Use Only

Thank you for your recent purchase.
 If you would like to learn more about antibodies, please visit www.elabscience.com.

Focus on your research
Service for life science

Applications:WB-Western Blot IHC-Immunohistochemistry IF-Immunofluorescence IP-Immunoprecipitation FC-Flow cytometry ChIP-Chromatin Immunoprecipitation Reactivity: H-Human R-Rat M-Mouse Mk-Monkey Dg-Dog Ch-Chicken Hm-Hamster Rb-Rabbit Sh-Sheep Pg-Pig Z-Zebrafish X-Xenopus C-Cow.