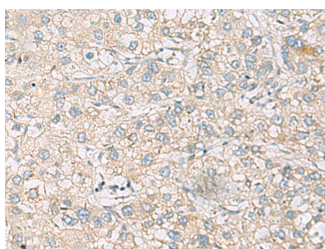


RAC2 Polyclonal Antibody

Catalog No.	E-AB-53322	Reactivity	H,M
Storage	Store at -20°C. Avoid freeze / thaw cycles.	Host	Rabbit
Applications	IHC,ELISA	Isotype	IgG

Note: Centrifuge before opening to ensure complete recovery of vial contents.

Images



Immunohistochemistry of paraffin-embedded Human liver cancer tissue using RAC2 Polyclonal Antibody at dilution of 1:60(×200)

Immunogen Information

Immunogen	Synthetic peptide of human RAC2
Gene Accession	NP002863
Swissprot	P15153
Synonyms	EN 7,EN-7,EN7,GX,HSPC 022,HSPC022,p21 Rac 2,p21 Rac2,p21-Rac2,p21Rac2,RAC 2,Rac2,RAC2

Product Information

Buffer	PBS with 0.05% NaN ₃ and 40% Glycerol,pH7.4
Purify	Antigen affinity purification
Dilution	IHC 1:50-1:200, ELISA 1:5000-1:10000

Background

RAC2,also named as GX,belongs to the small GTPase superfamily and Rho family. RAC2 is a plasma membrane-associated small GTPase which cycles between an active GTP-bound and inactive GDP-bound state. In active state binds to a variety of effector proteins to regulate cellular responses,such as secretory processes,phagocytose of apoptotic cells and epithelial cell polarization. RAC2 augments the production of reactive oxygen species (ROS) by NADPH oxidase. Defects in RAC2 are the cause of neutrophil immunodeficiency syndrome.

For Research Use Only

Thank you for your recent purchase.
 If you would like to learn more about antibodies,please visit www.elabscience.com.

**Focus on your research
 Service for life science**

Applications:WB-Western Blot IHC-Immunohistochemistry IF-Immunofluorescence IP-Immunoprecipitation FC-Flow cytometry ChIP-Chromatin Immunoprecipitation Reactivity: H-Human R-Rat M-Mouse Mk-Monkey Dg-Dog Ch-Chicken Hm-Hamster Rb-Rabbit Sh-Sheep Pg-Pig Z-Zebrafish X-Xenopus C-Cow.