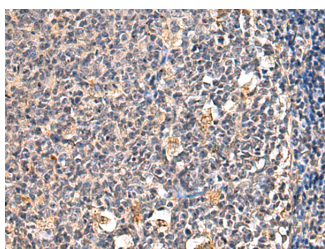


## ENTPD1 Polyclonal Antibody

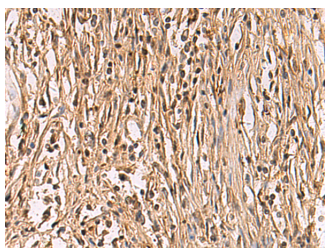
<b>Catalog No.</b>	E-AB-53347	<b>Reactivity</b>	H,M,R
<b>Storage</b>	Store at -20°C. Avoid freeze / thaw cycles.	<b>Host</b>	Rabbit
<b>Applications</b>	IHC,ELISA	<b>Isotype</b>	IgG

**Note:** Centrifuge before opening to ensure complete recovery of vial contents.

### Images



Immunohistochemistry of paraffin-embedded Human tonsil tissue using ENTPD1 Polyclonal Antibody at dilution of 1:60(×200)



Immunohistochemistry of paraffin-embedded Human colorectal cancer tissue using ENTPD1 Polyclonal Antibody at dilution of 1:60(×200)

### Immunogen Information

<b>Immunogen</b>	Synthetic peptide of human ENTPD1
<b>Gene Accession</b>	NP001767
<b>Swissprot</b>	P49961
<b>Synonyms</b>	ATPDase,CD 39,Ecto-ATP diphosphohydrolase 1,Ecto-ATPase 1,NTPDase 1,NTPDase1,SPG64

### Product Information

<b>Buffer</b>	PBS with 0.05% NaN <sub>3</sub> and 40% Glycerol,pH7.4
<b>Purify</b>	Antigen affinity purification
<b>Dilution</b>	IHC 1:50-1:100, ELISA 1:5000-1:10000

### Background

ENTPD1(Ectonucleoside triphosphate diphosphohydrolase 1) is also named as CD39,NTPDase 1,Ecto-ATPDase 1 and belongs to the GDA1/CD39 NTPase family. In the nervous system,it can hydrolyze ATP and other nucleotides to regulate purinergic neurotransmission.It is a noncovalent tetrameric protein and that detergent inhibition of enzymatic activity is caused by dissociation of ectoapyrase tetramers into monomers.And it is a 70- to 100-kDa protein that is heavily N-glycosylated. This protein has 6 glycosylation sites and 3 isoforms(58 kDa,59 kDa and 34 kDa) produced by alternative splicing. The soluble isoform of CD39(38-478 amino acid) locates to the extracellular part and this antibody can recognize the soluble form of CD39 (38-478aa) molecule.

#### For Research Use Only

Thank you for your recent purchase.  
 If you would like to learn more about antibodies,please visit [www.elabscience.com](http://www.elabscience.com).

**Focus on your research  
 Service for life science**

Applications:WB-Western Blot IHC-Immunohistochemistry IF-Immunofluorescence IP-Immunoprecipitation FC-Flow cytometry ChIP-Chromatin Immunoprecipitation Reactivity: H-Human R-Rat M-Mouse Mk-Monkey Dg-Dog Ch-Chicken Hm-Hamster Rb-Rabbit Sh-Sheep Pg-Pig Z-Zebrafish X-Xenopus C-Cow.