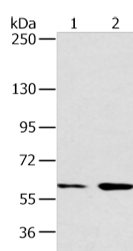


## ATG16L1 Polyclonal Antibody

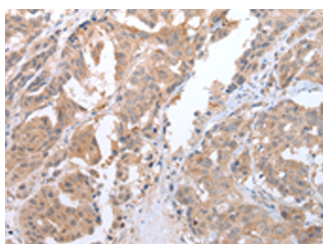
<b>Catalog No.</b>	E-AB-53360	<b>Reactivity</b>	H,M
<b>Storage</b>	Store at -20°C. Avoid freeze / thaw cycles.	<b>Host</b>	Rabbit
<b>Applications</b>	WB,IHC,ELISA	<b>Isotype</b>	IgG

**Note:** Centrifuge before opening to ensure complete recovery of vial contents.

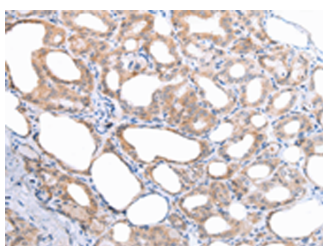
### Images



Western blot analysis of HeLa and raji cell using ATG16L1 Polyclonal Antibody at dilution of 1:750



Immunohistochemistry of paraffin-embedded Human breast cancer tissue using ATG16L1 Polyclonal Antibody at dilution of 1:45(×200)



Immunohistochemistry of paraffin-embedded Human thyroid cancer tissue using ATG16L1 Polyclonal Antibody at dilution of 1:45(×200)

### Immunogen Information

<b>Immunogen</b>	Synthetic peptide of human ATG16L1
<b>Gene Accession</b>	NP110430
<b>Swissprot</b>	Q676U5
<b>Synonyms</b>	A16L1,APG16 like 1,APG16-like 1,APG16L,APG16L beta,ATG16A,ATG16L,FLJ00045,IBD10

### Product Information

<b>Calculated MW</b>	68 kDa
<b>Observed MW</b>	Refer to figures
<b>Buffer</b>	PBS with 0.05% NaN <sub>3</sub> and 40% Glycerol,pH7.4
<b>Purify</b>	Antigen affinity purification
<b>Dilution</b>	WB 1:500-1:2000, IHC 1:30-1:150, ELISA 1:2000-1:5000

### Background

ATG16L1 (Autophagy Related 16 Like 1) is a Protein Coding gene. Diseases associated with ATG16L1 include Inflammatory Bowel Disease 10 and Inflammatory Bowel Disease. Among its related pathways are Autophagy Pathway and Senescence and Autophagy in Cancer. GO annotations related to this gene include identical protein binding. An important paralog of this gene is ATG16L2. The protein encoded by this gene is part of a large protein complex that is necessary for autophagy, the major process by which intracellular components are targeted to lysosomes for degradation. Defects in this gene are a cause of susceptibility to inflammatory bowel disease type 10 (IBD10). Several transcript variants encoding different isoforms have been found for this gene.

#### For Research Use Only

Thank you for your recent purchase.  
 If you would like to learn more about antibodies, please visit [www.elabscience.com](http://www.elabscience.com).

**Focus on your research  
 Service for life science**

Applications:WB-Western Blot IHC-Immunohistochemistry IF-Immunofluorescence IP-Immunoprecipitation FC-Flow cytometry ChIP-Chromatin Immunoprecipitation Reactivity: H-Human R-Rat M-Mouse Mk-Monkey Dg-Dog Ch-Chicken Hm-Hamster Rb-Rabbit Sh-Sheep Pg-Pig Z-Zebrafish X-Xenopus C-Cow.