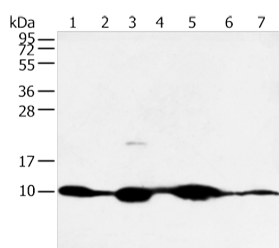


COX7C Polyclonal Antibody

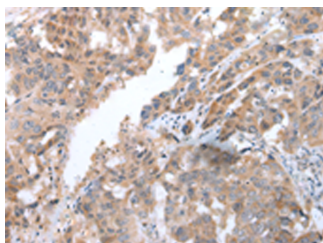
Catalog No.	E-AB-53363	Reactivity	H,M,R
Storage	Store at -20°C. Avoid freeze / thaw cycles.	Host	Rabbit
Applications	WB,IHC,ELISA	Isotype	IgG

Note: Centrifuge before opening to ensure complete recovery of vial contents.

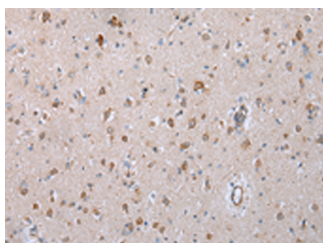
Images



Western blot analysis of Mouse muscle and human fetal muscle tissue mouse heart tissue and PC3 cell mouse kidney and small intestines tissue 231 cell using COX7C Polyclonal Antibody at dilution of 1:300



Immunohistochemistry of paraffin-embedded Human breast cancer tissue using COX7C Polyclonal Antibody at dilution of 1:40(×200)



Immunohistochemistry of paraffin-embedded Human brain tissue using COX7C Polyclonal Antibody at dilution of 1:40(×200)

Immunogen Information

Immunogen	Synthetic peptide of human COX7C
Gene Accession	NP001858
Swissprot	P15954
Synonyms	COX7C,COX7C,Cytochrome c oxidase polypeptide VIIc,Cytochrome c oxidase subunit 7C,mitochondrial

Product Information

Calculated MW	7 kDa
Observed MW	Refer to figures
Buffer	PBS with 0.05% NaN ₃ and 40% Glycerol,pH7.4
Purify	Antigen affinity purification
Dilution	WB 1:500-1:2000, IHC 1:30-1:150, ELISA 1:2000-1:5000

Background

Cytochrome c oxidase (COX), the terminal component of the mitochondrial respiratory chain, catalyzes the electron transfer from reduced cytochrome c to oxygen. This component is a heteromeric complex consisting of 3 catalytic subunits encoded by mitochondrial genes and multiple structural subunits encoded by nuclear genes. The mitochondrially-encoded subunits function in electron transfer, and the nuclear-encoded subunits may function in the regulation and assembly of the complex.

For Research Use Only

Thank you for your recent purchase.
 If you would like to learn more about antibodies, please visit www.elabscience.com.

**Focus on your research
 Service for life science**

Applications:WB-Western Blot IHC-Immunohistochemistry IF-Immunofluorescence IP-Immunoprecipitation FC-Flow cytometry ChIP-Chromatin Immunoprecipitation Reactivity: H-Human R-Rat M-Mouse Mk-Monkey Dg-Dog Ch-Chicken Hm-Hamster Rb-Rabbit Sh-Sheep Pg-Pig Z-Zebrafish X-Xenopus C-Cow.