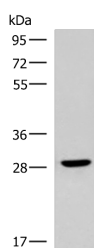


CLEC9A Polyclonal Antibody

Catalog No.	E-AB-53368	Reactivity	H
Storage	Store at -20°C. Avoid freeze / thaw cycles.	Host	Rabbit
Applications	WB,ELISA	Isotype	IgG

Note: Centrifuge before opening to ensure complete recovery of vial contents.

Images



Western blot analysis of Human fetal brain tissue lysate using CLEC9A Polyclonal Antibody at dilution of 1:800

Immunogen Information

Immunogen	Synthetic peptide of human CLEC9A
Gene Accession	NP997228.1
Swissprot	Q6UXN8
Synonyms	C type lectin domain family 9, member A,C-type lectin domain family 9 member A,CLC9A,CLEC9A, DNGR1,HEEE9341,PRO34046,UNQ9341

Product Information

Calculated MW	27 kDa
Observed MW	Refer to figures
Buffer	PBS with 0.05% NaN ₃ and 40% Glycerol,pH7.4
Purify	Antigen affinity purification
Dilution	WB 1:500-1:2000, ELISA 1:5000-1:10000

Background

CLEC9A is a group V C-type lectin-like receptor (CTLR) that functions as an activation receptor and is expressed on myeloid lineage cells. Flow cytometric, Western blot, and deglycosylation analyses showed surface expression of a glycosylated CLEC9A dimer of 40 and 45 kD under reducing conditions. The deglycosylated dimer was approximately 30 and 35 kD. RT-PCR detected CLEC9A expression in most human tissues examined, with highest levels in brain, thymus, and spleen.

For Research Use Only

Thank you for your recent purchase.
 If you would like to learn more about antibodies, please visit www.elabscience.com.

**Focus on your research
 Service for life science**

Applications:WB-Western Blot IHC-Immunohistochemistry IF-Immunofluorescence IP-Immunoprecipitation FC-Flow cytometry ChIP-Chromatin Immunoprecipitation Reactivity: H-Human R-Rat M-Mouse Mk-Monkey Dg-Dog Ch-Chicken Hm-Hamster Rb-Rabbit Sh-Sheep Pg-Pig Z-Zebrafish X-Xenopus C-Cow.