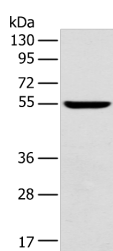


FOXG1 Polyclonal Antibody

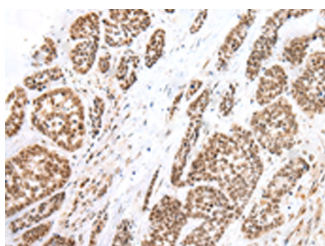
| | | | |
|---------------------|---|-------------------|--------|
| Catalog No. | E-AB-53376 | Reactivity | H,M,R |
| Storage | Store at -20°C. Avoid freeze / thaw cycles. | Host | Rabbit |
| Applications | WB,IHC,ELISA | Isotype | IgG |

Note: Centrifuge before opening to ensure complete recovery of vial contents.

Images



Western blot analysis of Mouse brain tissue using FOXG1 Polyclonal Antibody at dilution of 1:550



Immunohistochemistry of paraffin-embedded Human esophagus cancer tissue using FOXG1 Polyclonal Antibody at dilution of 1:60(×200)

Immunogen Information

| | |
|-----------------------|---|
| Immunogen | Synthetic peptide of human FOXG1 |
| Gene Accession | NP005240 |
| Swissprot | P55316 |
| Synonyms | BF-1,BF-2,BF1,BF2,Brain factor 1,Brain factor 2,FHKL,FKH2,FKHL1,FKHL2,FKHL3,FKHL4 |

Product Information

| | |
|----------------------|--|
| Calculated MW | 52 kDa |
| Observed MW | Refer to figures |
| Buffer | PBS with 0.05% NaN3 and 40% Glycerol,pH7.4 |
| Purify | Antigen affinity purification |
| Dilution | WB 1:500-1:2000, IHC 1:45-1:300, ELISA 1:2000-1:5000 |

Background

This locus encodes a member of the forked-head transcription factor family. The encoded protein, which functions as a repressor, may play a role in brain development. Mutations at this locus have been associated with Rett syndrome.

For Research Use Only

Thank you for your recent purchase.
 If you would like to learn more about antibodies, please visit www.elabscience.com.

**Focus on your research
 Service for life science**

Applications:WB-Western Blot IHC-Immunohistochemistry IF-Immunofluorescence IP-Immunoprecipitation FC-Flow cytometry ChIP-Chromatin Immunoprecipitation Reactivity: H-Human R-Rat M-Mouse Mk-Monkey Dg-Dog Ch-Chicken Hm-Hamster Rb-Rabbit Sh-Sheep Pg-Pig Z-Zebrafish X-Xenopus C-Cow.