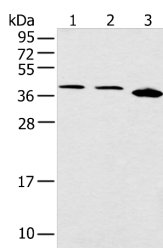


CCNG1 Polyclonal Antibody

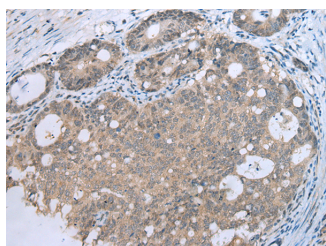
Catalog No.	E-AB-53386	Reactivity	H,M,R
Storage	Store at -20°C. Avoid freeze / thaw cycles.	Host	Rabbit
Applications	WB,IHC,ELISA	Isotype	IgG

Note: Centrifuge before opening to ensure complete recovery of vial contents.

Images



Western blot analysis of Jurkat Hela and 231 cell using CCNG1 Polyclonal Antibody at dilution of 1:400



Immunohistochemistry of paraffin-embedded Human gastric cancer tissue using CCNG1 Polyclonal Antibody at dilution of 1:30(×200)

Immunogen Information

Immunogen	Synthetic peptide of human CCNG1
Gene Accession	NP004051
Swissprot	P51959
Synonyms	CCNG 1,CCNG,CCNG1,CCNG1,CYCG1,Cyclin G,Cyclin G1,Cyclin-G,Cyclin-G1

Product Information

Calculated MW	34 kDa
Observed MW	Refer to figures
Buffer	PBS with 0.05% NaN ₃ and 40% Glycerol,pH7.4
Purify	Antigen affinity purification
Dilution	WB 1:500-1:2000, IHC 1:25-1:100, ELISA 1:2000-1:5000

Background

The eukaryotic cell cycle is governed by cyclin-dependent protein kinases (CDKs) whose activities are regulated by cyclins and CDK inhibitors. The protein encoded by this gene is a member of the cyclin family and contains the cyclin box. The encoded protein lacks the protein destabilizing (PEST) sequence that is present in other family members. Transcriptional activation of this gene can be induced by tumor protein p53. Two transcript variants encoding the same protein have been identified for this gene.

For Research Use Only

Thank you for your recent purchase.
 If you would like to learn more about antibodies, please visit www.elabscience.com.

Focus on your research Service for life science

Applications:WB-Western Blot IHC-Immunohistochemistry IF-Immunofluorescence IP-Immunoprecipitation FC-Flow cytometry ChIP-Chromatin Immunoprecipitation Reactivity: H-Human R-Rat M-Mouse Mk-Monkey Dg-Dog Ch-Chicken Hm-Hamster Rb-Rabbit Sh-Sheep Pg-Pig Z-Zebrafish X-Xenopus C-Cow.