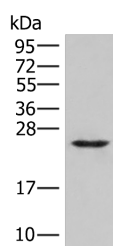


MRAS Polyclonal Antibody

| | | | |
|---------------------|---|-------------------|--------|
| Catalog No. | E-AB-53432 | Reactivity | H,M,R |
| Storage | Store at -20°C. Avoid freeze / thaw cycles. | Host | Rabbit |
| Applications | WB,ELISA | Isotype | IgG |

Note: Centrifuge before opening to ensure complete recovery of vial contents.

Images



Western blot analysis of Human fetal brain tissue lysate using MRAS Polyclonal Antibody at dilution of 1:400

Immunogen Information

| | |
|-----------------------|--|
| Immunogen | Synthetic peptide of human MRAS |
| Gene Accession | NP036351 |
| Swissprot | O14807 |
| Synonyms | FLJ42964,M ras,M-ras,Mras,RASM,Related Ras viral oncogene homolog 3,RRas3,XRas |

Product Information

| | |
|----------------------|--|
| Calculated MW | 24 kDa |
| Observed MW | Refer to figures |
| Buffer | PBS with 0.05% NaN ₃ and 40% Glycerol,pH7.4 |
| Purify | Antigen affinity purification |
| Dilution | WB 1:500-1:2000, ELISA 1:5000-1:10000 |

Background

This gene encodes a member of the Ras family of small GTPases. These membrane-associated proteins function as signal transducers in multiple processes including cell growth and differentiation, and dysregulation of Ras signaling has been associated with many types of cancer. The encoded protein may play a role in the tumor necrosis factor-alpha and MAP kinase signaling pathways. Alternatively spliced transcript variants encoding multiple isoforms have been observed for this gene.

For Research Use Only

Thank you for your recent purchase.
 If you would like to learn more about antibodies, please visit www.elabscience.com.

**Focus on your research
 Service for life science**

Applications:WB-Western Blot IHC-Immunohistochemistry IF-Immunofluorescence IP-Immunoprecipitation FC-Flow cytometry ChIP-Chromatin Immunoprecipitation Reactivity: H-Human R-Rat M-Mouse Mk-Monkey Dg-Dog Ch-Chicken Hm-Hamster Rb-Rabbit Sh-Sheep Pg-Pig Z-Zebrafish X-Xenopus C-Cow.