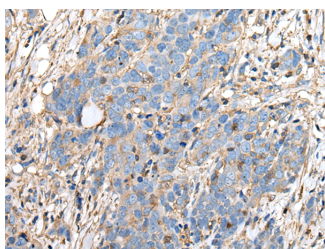


PLA2G16 Polyclonal Antibody

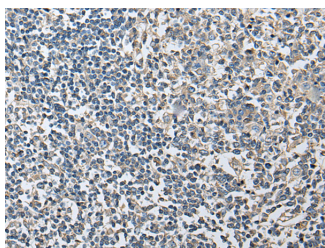
Catalog No.	E-AB-53452	Reactivity	H,M,R
Storage	Store at -20°C. Avoid freeze / thaw cycles.	Host	Rabbit
Applications	IHC,ELISA	Isotype	IgG

Note: Centrifuge before opening to ensure complete recovery of vial contents.

Images



Immunohistochemistry of paraffin-embedded Human thyroid cancer tissue using PLA2G16 Polyclonal Antibody at dilution of 1:40(x200)



Immunohistochemistry of paraffin-embedded Human tonsil tissue using PLA2G16 Polyclonal Antibody at dilution of 1:40(x200)

Immunogen Information

Immunogen	Synthetic peptide of human PLA2G16
Gene Accession	NP009000
Swissprot	P53816
Synonyms	AdPLA,HREV107 1,HREV107 3,HREV107,HREV107-1,HREV107-3,HRSL3,HRSL3

Product Information

Buffer	PBS with 0.05% NaN ₃ and 40% Glycerol,pH7.4
Purify	Antigen affinity purification
Dilution	IHC 1:30-1:150, ELISA 1:5000-1:10000

Background

Secretory phospholipase A₂ (PLA₂) enzymes cleave an acyl ester bond in the sn-2 position of glycerophospholipids. These extracellular proteins have a high disulfide bond content, low molecular mass (14 kDa), and require mM levels of Ca²⁺ for catalysis. They play a crucial role in the generation of arachidonates and eicosanoids, and have a number of biological actions including immunological responses, inflammation, cellular proliferation, vasoconstriction, and bronchioconstriction. Exhibits PLA_{1/2} activity, catalyzing the calcium-independent hydrolysis of acyl groups in various phosphatidylcholines (PC) and phosphatidylethanolamine (PE). For most substrates, PLA₁ activity is much higher than PLA₂ activity. Specifically catalyzes the release of fatty acids from phospholipids in adipose tissue (By similarity). N- and O-acylation activity is hardly detectable. Might decrease protein phosphatase 2A (PP2A) activity.

For Research Use Only

Thank you for your recent purchase.
 If you would like to learn more about antibodies, please visit www.elabscience.com.

**Focus on your research
 Service for life science**

Applications:WB-Western Blot IHC-Immunohistochemistry IF-Immunofluorescence IP-Immunoprecipitation FC-Flow cytometry ChIP-Chromatin Immunoprecipitation Reactivity: H-Human R-Rat M-Mouse Mk-Monkey Dg-Dog Ch-Chicken Hm-Hamster Rb-Rabbit Sh-Sheep Pg-Pig Z-Zebrafish X-Xenopus C-Cow.