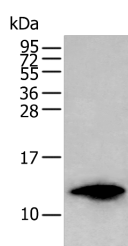


## FSHB Polyclonal Antibody

<b>Catalog No.</b>	E-AB-53479	<b>Reactivity</b>	H,M,R
<b>Storage</b>	Store at -20°C. Avoid freeze / thaw cycles.	<b>Host</b>	Rabbit
<b>Applications</b>	WB,ELISA	<b>Isotype</b>	IgG

**Note:** Centrifuge before opening to ensure complete recovery of vial contents.

### Images



Western blot analysis of HL-60 cell lysate using FSHB Polyclonal Antibody at dilution of 1:350

### Immunogen Information

<b>Immunogen</b>	Synthetic peptide of human FSHB
<b>Gene Accession</b>	NP000501
<b>Swissprot</b>	P01225
<b>Synonyms</b>	Follicle stimulating hormone subunit beta,follicle stimulating hormone,beta polypeptide,follitropin,Follitropin beta chain precursor,FSH B,FSH beta

### Product Information

<b>Calculated MW</b>	15 kDa
<b>Observed MW</b>	Refer to figures
<b>Buffer</b>	PBS with 0.05% NaN <sub>3</sub> and 40% Glycerol,pH7.4
<b>Purify</b>	Antigen affinity purification
<b>Dilution</b>	WB 1:500-1:2000, ELISA 1:5000-1:10000

### Background

Follicle stimulating hormone enables ovarian folliculogenesis to the antral follicle stage and is essential for Sertoli cell proliferation and maintenance of sperm quality in the testis. Members of the pituitary glycoprotein hormone family, of which FSH is one consist of a shared alpha chain and a beta chain encoded by a separate gene. The FSH beta gene encodes the beta subunit of follicle stimulating hormone.

#### For Research Use Only

Thank you for your recent purchase.

If you would like to learn more about antibodies, please visit [www.elabscience.com](http://www.elabscience.com).

**Focus on your research  
 Service for life science**

Applications:WB-Western Blot IHC-Immunohistochemistry IF-Immunofluorescence IP-Immunoprecipitation FC-Flow cytometry ChIP-Chromatin Immunoprecipitation Reactivity: H-Human R-Rat M-Mouse Mk-Monkey Dg-Dog Ch-Chicken Hm-Hamster Rb-Rabbit Sh-Sheep Pg-Pig Z-Zebrafish X-Xenopus C-Cow.