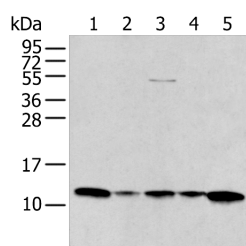


## CCL1 Polyclonal Antibody

<b>Catalog No.</b>	E-AB-53520	<b>Reactivity</b>	H
<b>Storage</b>	Store at -20°C. Avoid freeze / thaw cycles.	<b>Host</b>	Rabbit
<b>Applications</b>	WB,ELISA	<b>Isotype</b>	IgG

**Note:** Centrifuge before opening to ensure complete recovery of vial contents.

### Images



Western blot analysis of A431 Jurkat Lovo and Hepg2 cell Human breast cancer tissue lysates using CCL1 Polyclonal Antibody at dilution of 1:400

### Immunogen Information

<b>Immunogen</b>	Synthetic peptide of human CCL1
<b>Gene Accession</b>	NP002972
<b>Swissprot</b>	P22362
<b>Synonyms</b>	Ccl1,CCL1,P500,SCYA1,SISe,T lymphocyte-secreted protein I-309,TCA3

### Product Information

<b>Calculated MW</b>	11 kDa
<b>Observed MW</b>	Refer to figures
<b>Buffer</b>	PBS with 0.05% NaN <sub>3</sub> and 40% Glycerol,pH7.4
<b>Purify</b>	Antigen affinity purification
<b>Dilution</b>	WB 1:500-1:2000, ELISA 1:5000-1:10000

### Background

This gene is one of several chemokine genes clustered on the q-arm of chromosome 17. Chemokines form a superfamily of secreted proteins involved in immunoregulatory and inflammatory processes. The superfamily is divided into four subfamilies based on the arrangement of the N-terminal cysteine residues of the mature peptide. This chemokine, a member of the CC subfamily, is secreted by activated T cells and displays chemotactic activity for monocytes but not for neutrophils. It binds to the chemokine (C-C motif) receptor 8.

#### For Research Use Only

Thank you for your recent purchase.  
 If you would like to learn more about antibodies, please visit [www.elabscience.com](http://www.elabscience.com).

**Focus on your research  
 Service for life science**

Applications:WB-Western Blot IHC-Immunohistochemistry IF-Immunofluorescence IP-Immunoprecipitation FC-Flow cytometry ChIP-Chromatin Immunoprecipitation Reactivity: H-Human R-Rat M-Mouse Mk-Monkey Dg-Dog Ch-Chicken Hm-Hamster Rb-Rabbit Sh-Sheep Pg-Pig Z-Zebrafish X-Xenopus C-Cow.