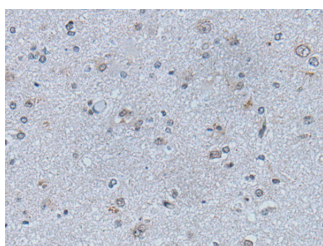


EFNB1 Polyclonal Antibody

| | | | |
|---------------------|---|-------------------|--------|
| Catalog No. | E-AB-53525 | Reactivity | H,M,R |
| Storage | Store at -20°C. Avoid freeze / thaw cycles. | Host | Rabbit |
| Applications | IHC,ELISA | Isotype | IgG |

Note: Centrifuge before opening to ensure complete recovery of vial contents.

Images



Immunohistochemistry of paraffin-embedded Human brain tissue using EFNB1 Polyclonal Antibody at dilution of 1:50(×200)

Immunogen Information

| | |
|-----------------------|--|
| Immunogen | Synthetic peptide of human EFNB1 |
| Gene Accession | NP004420 |
| Swissprot | P98172 |
| Synonyms | CFND,CFNS,EFL 3,EFL3,EFNB1,EFNB1,Elk L,Ephrin-B1,EPLG2,LERK 2,LERK-2,LERK2,MGC8782 |

Product Information

| | |
|-----------------|--|
| Buffer | PBS with 0.05% NaN ₃ and 40% Glycerol,pH7.4 |
| Purify | Antigen affinity purification |
| Dilution | IHC 1:30-1:150, ELISA 1:5000-1:10000 |

Background

Ephrin B proteins are thought to play key roles in cellular functions as diverse as neuronal migration and blood vessel development. Ephrin B molecules expressed at the membrane surface bind to the Ephrin B family receptors on target cells during cell to cell contact. This interaction leads to cell signaling in the target cell but also generates a reverse signal in the cell expressing Ephrin B on its surface. This reverse signaling event is thought to be critical for vessel maturation and neuronal development. Importantly, tyrosine phosphorylation of Ephrin B is thought to be a critical component of this reverse signaling event. Recent work demonstrated that Tyr331 of Ephrin B was phosphorylated in HEK293 cells after stimulation by the soluble Ephrin B2 receptor tyrosine kinase.

For Research Use Only

Thank you for your recent purchase.
 If you would like to learn more about antibodies, please visit www.elabscience.com.

**Focus on your research
 Service for life science**

Applications:WB-Western Blot IHC-Immunohistochemistry IF-Immunofluorescence IP-Immunoprecipitation FC-Flow cytometry ChIP-Chromatin Immunoprecipitation Reactivity: H-Human R-Rat M-Mouse Mk-Monkey Dg-Dog Ch-Chicken Hm-Hamster Rb-Rabbit Sh-Sheep Pg-Pig Z-Zebrafish X-Xenopus C-Cow.