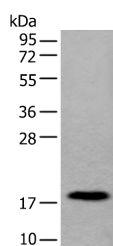


MYL12B Polyclonal Antibody

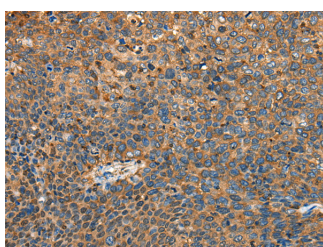
| | | | |
|---------------------|---|-------------------|--------|
| Catalog No. | E-AB-53541 | Reactivity | H,M,R |
| Storage | Store at -20°C. Avoid freeze / thaw cycles. | Host | Rabbit |
| Applications | WB,IHC,ELISA | Isotype | IgG |

Note: Centrifuge before opening to ensure complete recovery of vial contents.

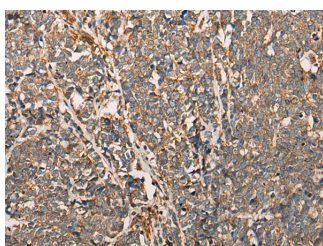
Images



Western blot analysis of Human urinary bladder tissue lysate using MYL12B Polyclonal Antibody at dilution of 1:250



Immunohistochemistry of paraffin-embedded Human cervical cancer tissue using MYL12B Polyclonal Antibody at dilution of 1:25(×200)



Immunohistochemistry of paraffin-embedded Human lung cancer tissue using MYL12B Polyclonal Antibody at dilution of 1:25(×200)

Immunogen Information

| | |
|-----------------------|---|
| Immunogen | Synthetic peptide of human MYL12B |
| Gene Accession | NP291024 |
| Swissprot | O14950 |
| Synonyms | ML12B,MLC 2A,MLC-2,MLC-2a,MLC-B,MLC20,MRLC2,MYL12B,MYLC2B |

Product Information

| | |
|----------------------|--|
| Calculated MW | 20 kDa |
| Observed MW | Refer to figures |
| Buffer | PBS with 0.05% NaN ₃ and 40% Glycerol,pH7.4 |
| Purify | Antigen affinity purification |
| Dilution | WB 1:500-1:2000, IHC 1:30-1:150, ELISA 1:5000-1:10000 |

Background

The activity of nonmuscle myosin II (see MYH9; MIM 160775) is regulated by phosphorylation of a regulatory light chain, such as MRLC2. This phosphorylation results in higher MgATPase activity and the assembly of myosin II filaments

For Research Use Only

Thank you for your recent purchase.
 If you would like to learn more about antibodies, please visit www.elabscience.com.

**Focus on your research
 Service for life science**

Applications:WB-Western Blot IHC-Immunohistochemistry IF-Immunofluorescence IP-Immunoprecipitation FC-Flow cytometry ChIP-Chromatin Immunoprecipitation Reactivity: H-Human R-Rat M-Mouse Mk-Monkey Dg-Dog Ch-Chicken Hm-Hamster Rb-Rabbit Sh-Sheep Pg-Pig Z-Zebrafish X-Xenopus C-Cow.