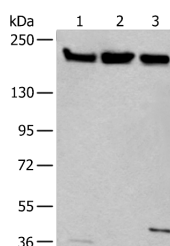


## XRN1 Polyclonal Antibody

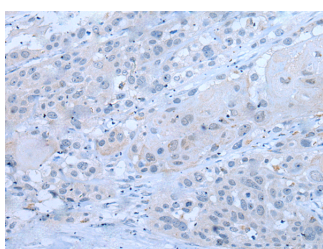
<b>Catalog No.</b>	E-AB-53553	<b>Reactivity</b>	H,M
<b>Storage</b>	Store at -20°C. Avoid freeze / thaw cycles.	<b>Host</b>	Rabbit
<b>Applications</b>	WB,IHC,ELISA	<b>Isotype</b>	IgG

**Note:** Centrifuge before opening to ensure complete recovery of vial contents.

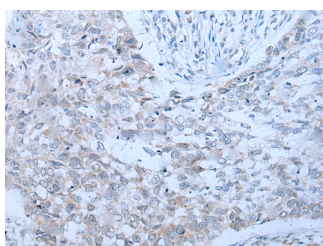
### Images



Western blot analysis of HeLa 231 and K562 cell lysates using XRN1 Polyclonal Antibody at dilution of 1:250



Immunohistochemistry of paraffin-embedded Human esophagus cancer tissue using XRN1 Polyclonal Antibody at dilution of 1:25(×200)



Immunohistochemistry of paraffin-embedded Human lung cancer tissue using XRN1 Polyclonal Antibody at dilution of 1:25(×200)

### Immunogen Information

<b>Immunogen</b>	Synthetic peptide of human XRN1
<b>Gene Accession</b>	NP061874
<b>Swissprot</b>	Q8IZH2
<b>Synonyms</b>	5'-3' Exoribonuclease 1,SEP1 ,EC 3.1.13.-

### Product Information

<b>Calculated MW</b>	194 kDa
<b>Observed MW</b>	Refer to figures
<b>Buffer</b>	PBS with 0.05% NaN <sub>3</sub> and 40% Glycerol,pH7.4
<b>Purify</b>	Antigen affinity purification
<b>Dilution</b>	WB 1:500-1:2000, IHC 1:10-1:50, ELISA 1:5000-1:10000

### Background

This gene encodes a member of the 5'-3' exonuclease family. The encoded protein may be involved in replication-dependent histone mRNA degradation, and interacts directly with the enhancer of mRNA-decapping protein 4. In addition to mRNA metabolism, a similar protein in yeast has been implicated in a variety of nuclear and cytoplasmic functions, including homologous recombination, meiosis, telomere maintenance, and microtubule assembly. Mutations in this gene are associated with osteosarcoma, suggesting that the encoded protein may also play a role in bone formation. Alternative splicing results in multiple transcript variants.

#### For Research Use Only

Thank you for your recent purchase.  
 If you would like to learn more about antibodies, please visit [www.elabscience.com](http://www.elabscience.com).

**Focus on your research  
 Service for life science**

Applications:WB-Western Blot IHC-Immunohistochemistry IF-Immunofluorescence IP-Immunoprecipitation FC-Flow cytometry ChIP-Chromatin Immunoprecipitation Reactivity: H-Human R-Rat M-Mouse Mk-Monkey Dg-Dog Ch-Chicken Hm-Hamster Rb-Rabbit Sh-Sheep Pg-Pig Z-Zebrafish X-Xenopus C-Cow.