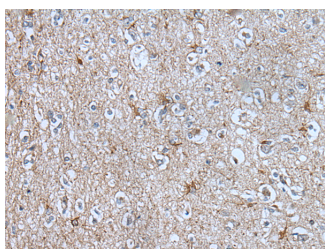


## BMP1 Polyclonal Antibody

<b>Catalog No.</b>	E-AB-53602	<b>Reactivity</b>	H,M
<b>Storage</b>	Store at -20°C. Avoid freeze / thaw cycles.	<b>Host</b>	Rabbit
<b>Applications</b>	IHC,ELISA	<b>Isotype</b>	IgG

**Note:** Centrifuge before opening to ensure complete recovery of vial contents.

### Images



Immunohistochemistry of paraffin-embedded Human brain tissue using BMP1 Polyclonal Antibody at dilution of 1:105(×200)

### Immunogen Information

<b>Immunogen</b>	Synthetic peptide of human BMP1
<b>Gene Accession</b>	NP006120
<b>Swissprot</b>	P13497
<b>Synonyms</b>	BMP 1,OI13,PCOLC,PCP,PCP2,Procollagen C endopeptidase,TLD,Tolloid,Drosophila

### Product Information

<b>Buffer</b>	PBS with 0.05% NaN <sub>3</sub> and 40% Glycerol,pH7.4
<b>Purify</b>	Antigen affinity purification
<b>Dilution</b>	IHC 1:50-1:300, ELISA 1:5000-1:10000

### Background

BMP1 (Bone Morphogenetic Protein 1) is a Protein Coding gene. Diseases associated with BMP1 include Osteogenesis Imperfecta, Type Xiii and Bmp1-Related Osteogenesis Imperfecta. Among its related pathways are GPCR Pathway and PEDF Induced Signaling. GO annotations related to this gene include calcium ion binding and growth factor activity. An important paralog of this gene is TLL2. This gene encodes a protein that is capable of inducing formation of cartilage in vivo. Although other bone morphogenetic proteins are members of the TGF-beta superfamily, this gene encodes a protein that is not closely related to other known growth factors. This gene is expressed as alternatively spliced variants that share an N-terminal protease domain but differ in their C-terminal region.

#### For Research Use Only

Thank you for your recent purchase.  
 If you would like to learn more about antibodies, please visit [www.elabscience.com](http://www.elabscience.com).

**Focus on your research  
 Service for life science**

Applications:WB-Western Blot IHC-Immunohistochemistry IF-Immunofluorescence IP-Immunoprecipitation FC-Flow cytometry ChIP-Chromatin Immunoprecipitation Reactivity: H-Human R-Rat M-Mouse Mk-Monkey Dg-Dog Ch-Chicken Hm-Hamster Rb-Rabbit Sh-Sheep Pg-Pig Z-Zebrafish X-Xenopus C-Cow.