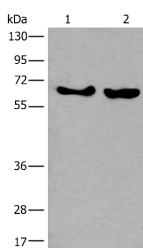


## BORA Polyclonal Antibody

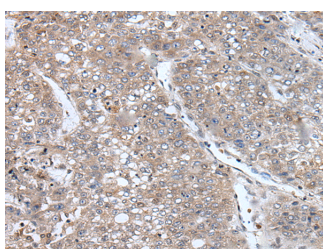
<b>Catalog No.</b>	E-AB-53604	<b>Reactivity</b>	H
<b>Storage</b>	Store at -20°C. Avoid freeze / thaw cycles.	<b>Host</b>	Rabbit
<b>Applications</b>	WB,IHC,ELISA	<b>Isotype</b>	IgG

**Note:** Centrifuge before opening to ensure complete recovery of vial contents.

### Images



Western blot analysis of K562 and Hela cell lysates using BORA Polyclonal Antibody at dilution of 1:800



Immunohistochemistry of paraffin-embedded Human liver cancer tissue using BORA Polyclonal Antibody at dilution of 1:105(×200)

### Immunogen Information

<b>Immunogen</b>	Synthetic peptide of human BORA
<b>Gene Accession</b>	NP079084
<b>Swissprot</b>	Q6PGQ7
<b>Synonyms</b>	Aurora borealis,bora,bora, aurora kinase A activator,BORA,C13orf34,Chromosome 13 open reading frame 34

### Product Information

<b>Calculated MW</b>	61 kDa
<b>Observed MW</b>	Refer to figures
<b>Buffer</b>	PBS with 0.05% NaN <sub>3</sub> and 40% Glycerol,pH7.4
<b>Purify</b>	Antigen affinity purification
<b>Dilution</b>	WB 1:500-1:2000, IHC 1:50-1:300, ELISA 1:5000-1:10000

### Background

Aurora related kinase-1 (ARK-1) is a centrosome-associated serine/threonine kinase that regulates centrosome separation, bipolar spindle assembly and chromosome segregation during mitosis. Bora (protein aurora borealis) is a 559 amino acid protein that activates ARK-1. Bora is localized to the nucleus until mitosis is initiated, when it then translocates to the cytoplasm. This translocation is dependent on activated Cdc2, which releases Bora to bind and activate ARK-1 in the cytoplasm. Plk (polo-like kinase) interacts with Bora to control the accessibility of its activation loop for phosphorylation and activation on its N-terminus by ARK-1. It is through this mechanism that Bora and ARK-1 control cellular mitotic entry. Downregulation of the gene encoding Bora results in multipolar spindles in mitosis, a phenomenon that is also observed when ARK-1 function is blocked.

#### For Research Use Only

Thank you for your recent purchase.  
 If you would like to learn more about antibodies, please visit [www.elabscience.com](http://www.elabscience.com).

**Focus on your research  
 Service for life science**

Applications:WB-Western Blot IHC-Immunohistochemistry IF-Immunofluorescence IP-Immunoprecipitation FC-Flow cytometry ChIP-Chromatin Immunoprecipitation Reactivity: H-Human R-Rat M-Mouse Mk-Monkey Dg-Dog Ch-Chicken Hm-Hamster Rb-Rabbit Sh-Sheep Pg-Pig Z-Zebrafish X-Xenopus C-Cow.