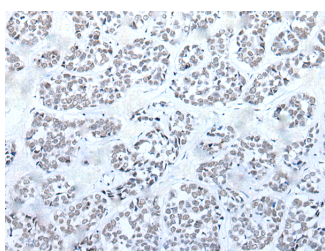


BRD3 Polyclonal Antibody

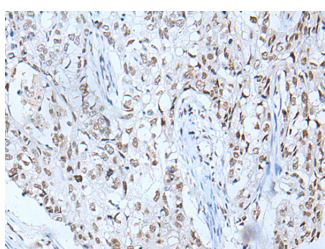
Catalog No.	E-AB-53605	Reactivity	H,M
Storage	Store at -20°C. Avoid freeze / thaw cycles.	Host	Rabbit
Applications	IHC,ELISA	Isotype	IgG

Note: Centrifuge before opening to ensure complete recovery of vial contents.

Images



Immunohistochemistry of paraffin-embedded Human esophagus cancer tissue using BRD3 Polyclonal Antibody at dilution of 1:60(×200)



Immunohistochemistry of paraffin-embedded Human lung cancer tissue using BRD3 Polyclonal Antibody at dilution of 1:60(×200)

Immunogen Information

Immunogen	Synthetic peptide of human BRD3
Gene Accession	NP031397
Swissprot	Q15059
Synonyms	BRD 3,Brd3,BRD3,ORFX,RING3 like gene,RING3-like protein,RING3L

Product Information

Buffer	PBS with 0.05% NaN ₃ and 40% Glycerol,pH7.4
Purify	Antigen affinity purification
Dilution	IHC 1:40-1:200, ELISA 1:5000-1:10000

Background

This gene was identified based on its homology to the gene encoding the RING3 protein, a serine/threonine kinase. The gene localizes to 9q34, a region which contains several major histocompatibility complex (MHC) genes. The function of the encoded protein is not known. BRD3 (Bromodomain Containing 3) is a Protein Coding gene. Diseases associated with BRD3 include Foodborne Botulism and Infant Botulism. GO annotations related to this gene include chromatin binding and lysine-acetylated histone binding. An important paralog of this gene is BRD2.

For Research Use Only

Thank you for your recent purchase.
 If you would like to learn more about antibodies, please visit www.elabscience.com.

**Focus on your research
 Service for life science**

Applications: WB-Western Blot IHC-Immunohistochemistry IF-Immunofluorescence IP-Immunoprecipitation FC-Flow cytometry ChIP-Chromatin Immunoprecipitation Reactivity: H-Human R-Rat M-Mouse Mk-Monkey Dg-Dog Ch-Chicken Hm-Hamster Rb-Rabbit Sh-Sheep Pg-Pig Z-Zebrafish X-Xenopus C-Cow.