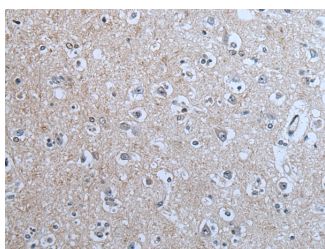


## BRSK2 Polyclonal Antibody

<b>Catalog No.</b>	E-AB-53606	<b>Reactivity</b>	H,M,R
<b>Storage</b>	Store at -20°C. Avoid freeze / thaw cycles.	<b>Host</b>	Rabbit
<b>Applications</b>	IHC,ELISA	<b>Isotype</b>	IgG

**Note:** Centrifuge before opening to ensure complete recovery of vial contents.

### Images



Immunohistochemistry of paraffin-embedded Human brain tissue using BRSK2 Polyclonal Antibody at dilution of 1:70(×200)

### Immunogen Information

<b>Immunogen</b>	Synthetic peptide of human BRSK2
<b>Gene Accession</b>	NP001243556
<b>Swissprot</b>	Q8IWQ3
<b>Synonyms</b>	C11orf7,PEN11B,STK29,SADA,Chromosome 11 Open Reading Frame 7,Testicular Tissue Protein Li 30,Protein Kinase SAD1B,EC 2.7.11.26,EC 2.7.11,SAD1

### Product Information

<b>Buffer</b>	PBS with 0.05% NaN <sub>3</sub> and 40% Glycerol,pH7.4
<b>Purify</b>	Antigen affinity purification
<b>Dilution</b>	IHC 1:40-1:200, ELISA 1:5000-1:10000

### Background

BRSK2 (BR Serine/Threonine Kinase 2) is a Protein Coding gene. Diseases associated with BRSK2 include Limbic Encephalitis and Sporotrichosis. Among its related pathways are DNA Damage and LKB1 signaling events. Gene Ontology (GO) annotations related to this gene include transferase activity, transferring phosphorus-containing groups and protein tyrosine kinase activity. An important paralog of this gene is BRSK1

#### For Research Use Only

Thank you for your recent purchase.  
 If you would like to learn more about antibodies, please visit [www.elabscience.com](http://www.elabscience.com).

**Focus on your research  
 Service for life science**

Applications:WB-Western Blot IHC-Immunohistochemistry IF-Immunofluorescence IP-Immunoprecipitation FC-Flow cytometry ChIP-Chromatin Immunoprecipitation Reactivity: H-Human R-Rat M-Mouse Mk-Monkey Dg-Dog Ch-Chicken Hm-Hamster Rb-Rabbit Sh-Sheep Pg-Pig Z-Zebrafish X-Xenopus C-Cow.