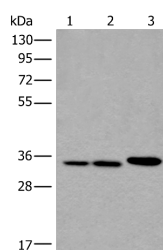


RPF2 Polyclonal Antibody

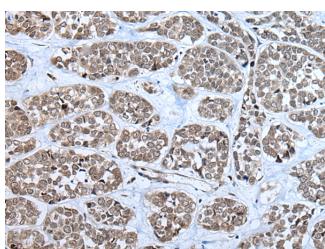
Catalog No.	E-AB-53607	Reactivity	H
Storage	Store at -20°C. Avoid freeze / thaw cycles.	Host	Rabbit
Applications	WB,IHC,ELISA	Isotype	IgG

Note: Centrifuge before opening to ensure complete recovery of vial contents.

Images



Western blot analysis of A549 HeLa and K562 cell lysates using RPF2 Polyclonal Antibody at dilution of 1:400



Immunohistochemistry of paraffin-embedded Human esophagus cancer tissue using RPF2 Polyclonal Antibody at dilution of 1:40(×200)

Immunogen Information

Immunogen	Synthetic peptide of human RPF2
Gene Accession	NP115570
Swissprot	Q9H7B2
Synonyms	BXDC1,Ribosome production factor 2 homolog,RPF2,RPF2

Product Information

Calculated MW	36 kDa
Observed MW	Refer to figures
Buffer	PBS with 0.05% NaN ₃ and 40% Glycerol,pH7.4
Purify	Antigen affinity purification
Dilution	WB 1:500-1:2000, IHC 1:30-1:150, ELISA 1:5000-1:10000

Background

BXDC1 (Brix domain-containing protein 1) is a 306 amino acid protein encoded by the human gene BXDC1. BXDC1 is a nuclear protein that contains one Brix domain. Brix domain containing proteins represent a family of proteins involved in the biogenesis of large ribosomal subunits. The Brix domain is a region with homology to the yeast protein Pitx1 (Ribosome biogenesis protein BRX1). Pitx1 is part of a complex that includes RPF1, RPF2 and SSF1 or SSF2. This complex is required for the biogenesis of the 60S ribosomal subunit.

For Research Use Only

Thank you for your recent purchase.
 If you would like to learn more about antibodies, please visit www.elabscience.com.

**Focus on your research
 Service for life science**

Applications:WB-Western Blot IHC-Immunohistochemistry IF-Immunofluorescence IP-Immunoprecipitation FC-Flow cytometry ChIP-Chromatin Immunoprecipitation Reactivity: H-Human R-Rat M-Mouse Mk-Monkey Dg-Dog Ch-Chicken Hm-Hamster Rb-Rabbit Sh-Sheep Pg-Pig Z-Zebrafish X-Xenopus C-Cow.