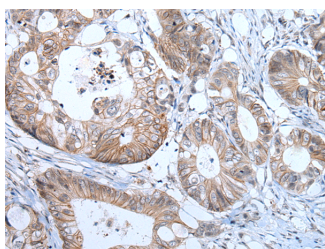


PRSS50 Polyclonal Antibody

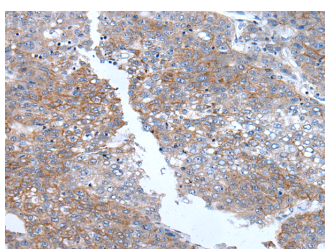
Catalog No.	E-AB-53609	Reactivity	H
Storage	Store at -20°C. Avoid freeze / thaw cycles.	Host	Rabbit
Applications	IHC,ELISA	Isotype	IgG

Note: Centrifuge before opening to ensure complete recovery of vial contents.

Images



Immunohistochemistry of paraffin-embedded Human colorectal cancer tissue using PRSS50 Polyclonal Antibody at dilution of 1:65(×200)



Immunohistochemistry of paraffin-embedded Human liver cancer tissue using PRSS50 Polyclonal Antibody at dilution of 1:65(×200)

Immunogen Information

Immunogen	Synthetic peptide of human PRSS50
Gene Accession	NP037402
Swissprot	Q9UI38
Synonyms	PRSS50,Serine protease 50,Testis-specific protease-like protein 50,TSP 50,TSP50

Product Information

Buffer	PBS with 0.05% NaN ₃ and 40% Glycerol,pH7.4
Purify	Antigen affinity purification
Dilution	IHC 1:40-1:200, ELISA 1:5000-1:10000

Background

PRSS50 (Protease, Serine 50) is a Protein Coding gene. Gene Ontology (GO) annotations related to this gene include serine-type endopeptidase activity and threonine-type endopeptidase activity. An important paralog of this gene is TPSB2.

For Research Use Only

Thank you for your recent purchase.
 If you would like to learn more about antibodies, please visit www.elabscience.com.

**Focus on your research
 Service for life science**

Applications:WB-Western Blot IHC-Immunohistochemistry IF-Immunofluorescence IP-Immunoprecipitation FC-Flow cytometry ChIP-Chromatin Immunoprecipitation Reactivity: H-Human R-Rat M-Mouse Mk-Monkey Dg-Dog Ch-Chicken Hm-Hamster Rb-Rabbit Sh-Sheep Pg-Pig Z-Zebrafish X-Xenopus C-Cow.