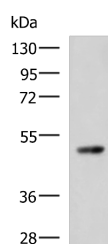


## TP53 Polyclonal Antibody

<b>Catalog No.</b>	E-AB-52130	<b>Reactivity</b>	H
<b>Storage</b>	Store at -20°C. Avoid freeze / thaw cycles.	<b>Host</b>	Rabbit
<b>Applications</b>	WB,ELISA	<b>Isotype</b>	IgG

**Note:** Centrifuge before opening to ensure complete recovery of vial contents.

### Images



Western blot analysis of 293T cell lysate using TP53 Polyclonal Antibody at dilution of 1:1000

### Immunogen Information

<b>Immunogen</b>	Fusion protein of human TP53
<b>Gene Accession</b>	BC003596
<b>Swissprot</b>	P04637
<b>Synonyms</b>	Antigen NY-CO-13,BCC7,Cellular tumor antigen p53,FLJ92943,LFS1,Mutant tumor protein 53,p53,p53 tumor suppressor,P53

### Product Information

<b>Calculated MW</b>	44 kDa
<b>Observed MW</b>	Refer to figures
<b>Buffer</b>	PBS with 0.05% NaN <sub>3</sub> and 40% Glycerol,pH7.4
<b>Purify</b>	Antigen affinity purification
<b>Dilution</b>	WB 1:500-1:2000, ELISA 1:5000-1:10000

### Background

TP53,also named as P53 and NY-CO-13,belongs to the p53 family. It has 9 isoforms. In SDS-Page,the MW is about 53kd. TP53 acts as a tumor suppressor in many tumor types; induces growth arrest or apoptosis depending on the physiological circumstances and cell type. It is involved in cell cycle regulation as a trans-activator that acts to negatively regulate cell division by controlling a set of genes required for this process. The antibody reacts specifically with 53 kDa protein.

#### For Research Use Only

Thank you for your recent purchase.  
 If you would like to learn more about antibodies,please visit [www.elabscience.com](http://www.elabscience.com).

**Focus on your research  
 Service for life science**

Applications:WB-Western Blot IHC-Immunohistochemistry IF-Immunofluorescence IP-Immunoprecipitation FC-Flow cytometry ChIP-Chromatin Immunoprecipitation Reactivity: H-Human R-Rat M-Mouse Mk-Monkey Dg-Dog Ch-Chicken Hm-Hamster Rb-Rabbit Sh-Sheep Pg-Pig Z-Zebrafish X-Xenopus C-Cow.