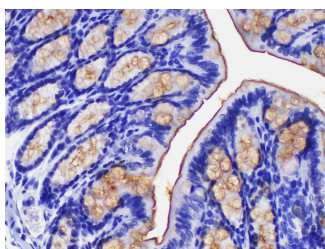


CEACAM1 Polyclonal Antibody

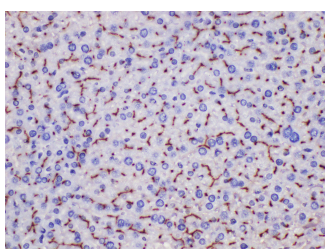
Catalog No.	E-AB-40352	Reactivity	M,R
Storage	Store at -20°C. Avoid freeze / thaw cycles.	Host	Rabbit
Applications	IHC	Isotype	IgG

Note: Centrifuge before opening to ensure complete recovery of vial contents.

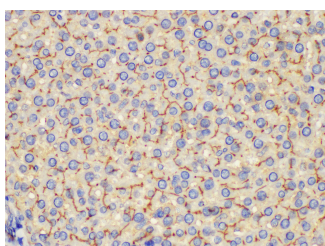
Images



Immunohistochemistry of paraffin-embedded Mouse colon using Ceacam1 Polyclonal Antibody at dilution of 1:200



Immunohistochemistry of paraffin-embedded Mouse liver using Ceacam1 Polyclonal Antibody at dilution of 1:200



Immunohistochemistry of paraffin-embedded Rat liver using Ceacam1 Polyclonal Antibody at dilution of 1:200

Immunogen Information

Immunogen	Recombinant Mouse Carcinoembryonic antigen-related cell adhesion molecule 1 protein
GeneID	26365
Swissprot	P31809
Synonyms	Antigen CD66,BGP 1,Biliary glycoprotein 1,CD66a,CEACAM1,meconium antigen 100

Product Information

Buffer	PBS with 0.05% Proclin300, 50% glycerol, pH7.3.
Purify	Antigen Affinity Purification
Dilution	IHC 1:100-1:300

Background

This gene encodes a member of the carcinoembryonic antigen (CEA) gene family, which belongs to the immunoglobulin superfamily. Two subgroups of the CEA family, the CEA cell adhesion molecules and the pregnancy-specific glycoproteins, are located within a 1.2 Mb cluster on the long arm of chromosome 19. Eleven pseudogenes of the CEA cell adhesion molecule subgroup are also found in the cluster. The encoded protein was originally described in bile ducts of liver as biliary glycoprotein. Subsequently, it was found to be a cell-cell adhesion molecule detected on leukocytes, epithelia, and endothelia. The encoded protein mediates cell adhesion via homophilic as well as heterophilic binding to other proteins of the subgroup.

For Research Use Only

Thank you for your recent purchase.
 If you would like to learn more about antibodies, please visit www.elabscience.com.

**Focus on your research
 Service for life science**

Applications:WB-Western Blot IHC-Immunohistochemistry IF-Immunofluorescence IP-Immunoprecipitation FC-Flow cytometry ChIP-Chromatin Immunoprecipitation Reactivity: H-Human R-Rat M-Mouse Mk-Monkey Dg-Dog Ch-Chicken Hm-Hamster Rb-Rabbit Sh-Sheep Pg-Pig Z-Zebrafish X-Xenopus C-Cow.