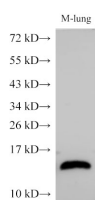


B2M Polyclonal Antibody

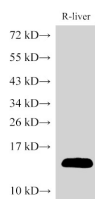
Catalog No.	E-AB-40354	Reactivity	M,R
Storage	Store at -20°C. Avoid freeze / thaw cycles.	Host	Rabbit
Applications	WB	Isotype	IgG

Note: Centrifuge before opening to ensure complete recovery of vial contents.

Images



Western Blot analysis of Mouse lung using B2M Polyclonal Antibody at dilution of 1:1000



Western Blot analysis of Rat liver using B2M Polyclonal Antibody at dilution of 1:1000

Immunogen Information

Immunogen	Recombinant Mouse Beta-2-microglobulin protein
GeneID	12010
Swissprot	P01887
Synonyms	B2M,Beta 2 microglobin,Beta 2 microglobulin precursor,CDABP0092,Hdcma22p,IMD43

Product Information

Calculated MW	13 kDa
Observed MW	13 kDa
Buffer	PBS with 0.05% Proclin300, 50% glycerol, pH7.3.
Purify	Antigen Affinity Purification
Dilution	WB 1:500-1:2000

Background

Beta-2-microglobulin (B2M) is a component of MHC class I molecules, which are present on the surface of nearly all nucleated cells. It can be found in body fluids under physiologic conditions as a result of shedding from cell surfaces or intracellular release. B2M has various biological functions, including antigen presentation. Investigations reveal that increased synthesis and release of B2M are present in several malignant diseases.

For Research Use Only

Thank you for your recent purchase.
 If you would like to learn more about antibodies, please visit www.elabscience.com.

**Focus on your research
 Service for life science**

Applications: WB-Western Blot IHC-Immunohistochemistry IF-Immunofluorescence IP-Immunoprecipitation FC-Flow cytometry ChIP-Chromatin Immunoprecipitation Reactivity: H-Human R-Rat M-Mouse Mk-Monkey Dg-Dog Ch-Chicken Hm-Hamster Rb-Rabbit Sh-Sheep Pg-Pig Z-Zebrafish X-Xenopus C-Cow.