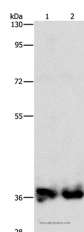


ASPA Polyclonal Antibody

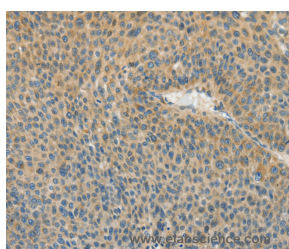
Catalog No.	E-AB-10966	Reactivity	H,M,R
Storage	Store at -20°C. Avoid freeze / thaw cycles.	Host	Rabbit
Applications	WB,IHC,ELISA	Isotype	IgG

Note: Centrifuge before opening to ensure complete recovery of vial contents.

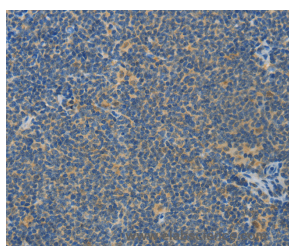
Images



Western Blot analysis of Mouse kidney and Human fetal kidney tissue using ASPA Polyclonal Antibody at dilution of 1:1400



Immunohistochemistry of paraffin-embedded Human liver cancer using ASPA Polyclonal Antibody at dilution of 1:80



Immunohistochemistry of paraffin-embedded Human lymphoma using ASPA Polyclonal Antibody at dilution of 1:80

Immunogen Information

Immunogen	Recombinant protein of human ASPA
Gene Accession	BC029128
Swissprot	P45381
Synonyms	ASP,ACY2

Product Information

Calculated MW	36kDa
Buffer	PBS with 0.05% sodium azide and 50% glycerol, PH7.4
Purify	Affinity purification
Dilution	WB 1:1000-1:5000, IHC 1:100-1:300

Background

This gene encodes an enzyme that catalyzes the conversion of N-acetyl_L-aspartic acid (NAA) to aspartate and acetate. NAA is abundant in the brain where hydrolysis by aspartoacylase is thought to help maintain white matter. This protein is an NAA scavenger in other tissues. Mutations in this gene cause Canavan disease. Alternatively spliced transcript variants have been found for this gene.

For Research Use Only

Thank you for your recent purchase.
If you would like to learn more about antibodies, please visit www.elabscience.com.

Focus on your research Service for life science

Applications: WB-Western Blot IHC-Immunohistochemistry IF-Immunofluorescence IP-Immunoprecipitation FC-Flow cytometry ChIP-Chromatin Immunoprecipitation Reactivity: H-Human R-Rat M-Mouse Mk-Monkey Dg-Dog Ch-Chicken Hm-Hamster Rb-Rabbit Sh-Sheep Pg-Pig Z-Zebrafish X-Xenopus C-Cow.