

## CYP4A11 Polyclonal Antibody

**Catalog No.** E-AB-11129

**Note:** Centrifuge before opening to ensure complete recovery of vial contents.

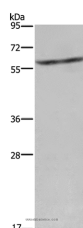
### Description

<b>Reactivity</b>	Human
<b>Immunogen</b>	Recombinant protein of human CYP4A11
<b>Host</b>	Rabbit
<b>Isotype</b>	IgG
<b>Purification</b>	Affinity purification
<b>Conjugation</b>	Unconjugated
<b>Buffer</b>	PBS with 0.05% sodium azide and 50% glycerol, PH7.4

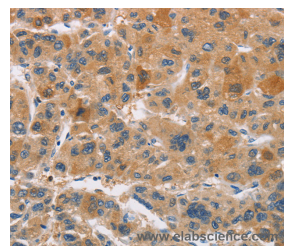
### Applications Recommended Dilution

<b>WB</b>	1:200-1:1000
<b>IHC</b>	1:50-1:200

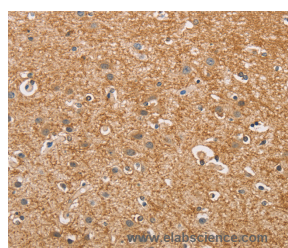
### Data



Western Blot analysis of Mouse liver tissue using CYP4A11 Polyclonal Antibody at dilution of 1:250  
**Calculated Mw:59kDa**



Immunohistochemistry of paraffin-embedded Human liver cancer using CYP4A11 Polyclonal Antibody at dilution of 1:30



Immunohistochemistry of paraffin-embedded Human brain using CYP4A11 Polyclonal Antibody at dilution of 1:30

### Preparation & Storage

**Storage** Store at -20°C. Avoid freeze / thaw cycles.

### Background

### For Research Use Only

This gene encodes a member of the cytochrome P450 superfamily of enzymes. The cytochrome P450 proteins are monooxygenases which catalyze many reactions involved in drug metabolism and synthesis of cholesterol, steroids and other lipids. This protein localizes to the endoplasmic reticulum and hydroxylates medium-chain fatty acids such as laurate and myristate.