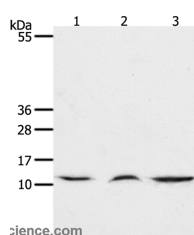


CCL17 Polyclonal Antibody

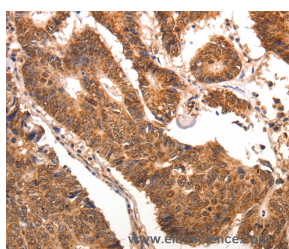
Catalog No.	E-AB-12309	Reactivity	H,M
Storage	Store at -20°C. Avoid freeze / thaw cycles.	Host	Rabbit
Applications	WB,IHC,ELISA	Isotype	IgG

Note: Centrifuge before opening to ensure complete recovery of vial contents.

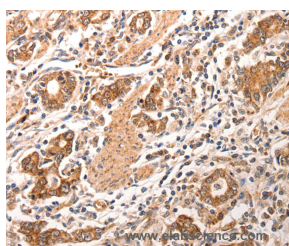
Images



Western Blot analysis of Mouse lung and thymus tissue, Human fetal muscle tissue using CCL17 Polyclonal Antibody at dilution of 1:1300



Immunohistochemistry of paraffin-embedded Human colon cancer using CCL17 Polyclonal Antibody at dilution of 1:70



Immunohistochemistry of paraffin-embedded Human gastric cancer using CCL17 Polyclonal Antibody at dilution of 1:70

Immunogen Information

Immunogen	Synthetic peptide of human CCL17
Gene Accession	NP_002978.1
Swissprot	Q92583
Synonyms	TARC,ABCD-2,SCYA17,A-152E5.3

Product Information

Calculated MW	11kDa
Buffer	PBS with 0.05% sodium azide and 50% glycerol, PH7.4
Purify	Affinity purification
Dilution	WB 1:500-1:2000, IHC 1:100-1:300

Background

This gene is one of several Cys-Cys (CC) cytokine genes clustered on the q arm of chromosome 16. Cytokines are a family of secreted proteins involved in immunoregulatory and inflammatory processes. The CC cytokines are proteins characterized by two adjacent cysteines. The cytokine encoded by this gene displays chemotactic activity for T lymphocytes, but not monocytes or granulocytes. The product of this gene binds to chemokine receptors CCR4 and CCR8. This chemokine plays important roles in T cell development in thymus as well as in trafficking and activation of mature T cells.

For Research Use Only

Thank you for your recent purchase.
If you would like to learn more about antibodies, please visit www.elabscience.com.

Focus on your research Service for life science

Applications: WB-Western Blot IHC-Immunohistochemistry IF-Immunofluorescence IP-Immunoprecipitation FC-Flow cytometry ChIP-Chromatin Immunoprecipitation Reactivity: H-Human R-Rat M-Mouse Mk-Monkey Dg-Dog Ch-Chicken Hm-Hamster Rb-Rabbit Sh-Sheep Pg-Pig Z-Zebrafish X-Xenopus C-Cow.