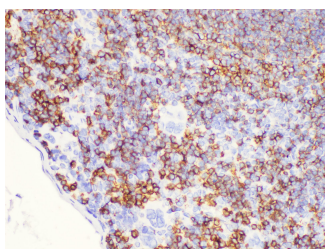


CD20 Polyclonal Antibody

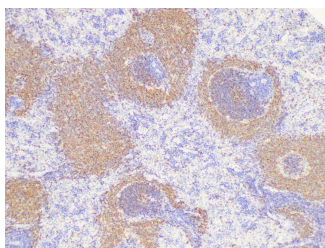
Catalog No.	E-AB-40362	Reactivity	M,R
Storage	Store at -20°C. Avoid freeze / thaw cycles.	Host	Rabbit
Applications	IHC	Isotype	IgG

Note: Centrifuge before opening to ensure complete recovery of vial contents.

Images



Immunohistochemistry of paraffin-embedded Mouse spleen using CD20 Polyclonal Antibody at dilution of 1:100



Immunohistochemistry of paraffin-embedded Rat spleen using CD20 Polyclonal Antibody at dilution of 1:100

Immunogen Information

Immunogen	Recombinant Mouse B-lymphocyte antigen CD20 protein
Swissprot	P19437
Synonyms	APY, ATOPY, B lymphocyte antigen CD20, B Lymphocyte Cell Surface Antigen B1,

Product Information

Buffer	PBS with 0.05% Proclin300 and 50% glycerol, pH7.3.
Purify	Antigen Affinity Purification
Dilution	IHC 1:50-1:200

Background

CD20 is a 33-37 kDa transmembrane phosphoprotein. CD20 is a B-lymphocyte surface molecule that is widely expressed during B-cell ontogeny, from early pre-B-cell developmental stages until final differentiation into plasma cells. CD20 functions as calcium-permeable cation channel. It is involved in the regulation of B-cell activation and proliferation. CD20 serves as a useful target for antibody-mediated therapeutic depletion of B-cells.

For Research Use Only

Thank you for your recent purchase.
 If you would like to learn more about antibodies, please visit www.elabscience.com.

**Focus on your research
 Service for life science**

Applications: WB-Western Blot IHC-Immunohistochemistry IF-Immunofluorescence IP-Immunoprecipitation FC-Flow cytometry ChIP-Chromatin Immunoprecipitation Reactivity: H-Human R-Rat M-Mouse Mk-Monkey Dg-Dog Ch-Chicken Hm-Hamster Rb-Rabbit Sh-Sheep Pg-Pig Z-Zebrafish X-Xenopus C-Cow.