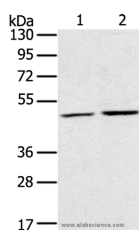


RRAGC Polyclonal Antibody

| | | | |
|---------------------|---|-------------------|--------|
| Catalog No. | E-AB-15367 | Reactivity | H,M |
| Storage | Store at -20°C. Avoid freeze / thaw cycles. | Host | Rabbit |
| Applications | WB,ELISA | Isotype | IgG |

Note: Centrifuge before opening to ensure complete recovery of vial contents.

Images



Western Blot analysis of K562 and NIH/3T3 cell using RRAGC Polyclonal Antibody at dilution of 1:400

Immunogen Information

| | |
|-----------------------|------------------------------------|
| Immunogen | Recombinant protein of human RRAGC |
| Gene Accession | BC016668 |
| Swissprot | Q9HB90 |
| Synonyms | GTR2,RAGC,TIB929 |

Product Information

| | |
|----------------------|---|
| Calculated MW | 44kDa |
| Buffer | PBS with 0.05% sodium azide and 50% glycerol, PH7.4 |
| Purify | Affinity purification |
| Dilution | WB 1:500-1:2000 |

Background

This gene encodes a member of the GTR/RAG GTP-binding protein family. The encoded protein is a monomeric guanine nucleotide-binding protein which forms a heterodimer with RRAGA and RRAGB and is primarily localized to the cytoplasm. The encoded protein promotes intracellular localization of the mTOR complex. Alternative splicing results in multiple transcript variants.

For Research Use Only

Thank you for your recent purchase.
 If you would like to learn more about antibodies, please visit www.elabscience.com.

**Focus on your research
 Service for life science**

Applications:WB-Western Blot IHC-Immunohistochemistry IF-Immunofluorescence IP-Immunoprecipitation FC-Flow cytometry ChIP-Chromatin Immunoprecipitation Reactivity: H-Human R-Rat M-Mouse Mk-Monkey Dg-Dog Ch-Chicken Hm-Hamster Rb-Rabbit Sh-Sheep Pg-Pig Z-Zebrafish X-Xenopus C-Cow.