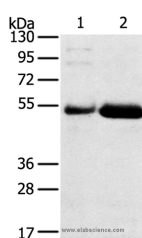


## SAMD3 Polyclonal Antibody

<b>Catalog No.</b>	E-AB-15376	<b>Reactivity</b>	H
<b>Storage</b>	Store at -20°C. Avoid freeze / thaw cycles.	<b>Host</b>	Rabbit
<b>Applications</b>	WB,ELISA	<b>Isotype</b>	IgG

**Note:** Centrifuge before opening to ensure complete recovery of vial contents.

### Images



Western Blot analysis of Human placenta and stomach cancer tissue using SAMD3 Polyclonal Antibody at dilution of 1:400

### Immunogen Information

<b>Immunogen</b>	Recombinant protein of human SAMD3
<b>Gene Accession</b>	BC029851
<b>Swissprot</b>	Q8N6K7
<b>Synonyms</b>	SAM domain-containing protein 3,SAMD3,SAMD3,Sterile alpha motif domain containing 3,Sterile alpha motif domain-containing protein 3

### Product Information

<b>Calculated MW</b>	61kDa
<b>Buffer</b>	PBS with 0.05% sodium azide and 50% glycerol, PH7.4
<b>Purify</b>	Affinity purification
<b>Dilution</b>	WB 1:500-1:2000

### Background

The sterile alpha motif (SAM) domain is a 70 residue structure found in a large number of proteins involved in diverse processes present throughout the eukaryotes. The SAM domain is known to bind RNA and is arranged in a small five-helix bundle with two large interfaces. There are three isoforms of SAMD3 produced by alternative splicing. The isoform 1 has been chosen as the canonical sequence. All positional information in this entry refers to it. The sequence of isoform 2 differs from the canonical sequence as follows: 219-221: FLW → AGV; 222-520: Missing. And the sequence of isoform 3 differs from the canonical sequence as follows: 1-1: M → MRSSKLQSPSPSQEKQGVYLQETAM.

#### For Research Use Only

Thank you for your recent purchase.  
 If you would like to learn more about antibodies, please visit [www.elabscience.com](http://www.elabscience.com).

**Focus on your research  
 Service for life science**

Applications: WB-Western Blot IHC-Immunohistochemistry IF-Immunofluorescence IP-Immunoprecipitation FC-Flow cytometry ChIP-Chromatin Immunoprecipitation Reactivity: H-Human R-Rat M-Mouse Mk-Monkey Dg-Dog Ch-Chicken Hm-Hamster Rb-Rabbit Sh-Sheep Pg-Pig Z-Zebrafish X-Xenopus C-Cow.