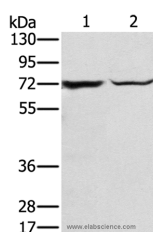


SLC25A13 Polyclonal Antibody

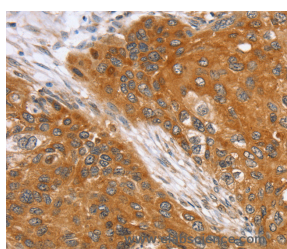
Catalog No.	E-AB-15390	Reactivity	H,M
Storage	Store at -20°C. Avoid freeze / thaw cycles.	Host	Rabbit
Applications	WB,IHC,ELISA	Isotype	IgG

Note: Centrifuge before opening to ensure complete recovery of vial contents.

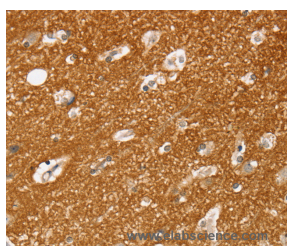
Images



Western Blot analysis of Mouse liver tissue and hepg2 cell using SLC25A13 Polyclonal Antibody at dilution of 1:450



Immunohistochemistry of paraffin-embedded Human esophagus cancer using SLC25A13 Polyclonal Antibody at dilution of 1:35



Immunohistochemistry of paraffin-embedded Human brain using SLC25A13 Polyclonal Antibody at dilution of 1:35

Immunogen Information

Immunogen	Recombinant protein of human SLC25A13
Gene Accession	BC006566
Swissprot	Q9UJS0
Synonyms	CTLN2,CITRIN,ARALAR2

Product Information

Calculated MW	74kDa
Buffer	PBS with 0.05% sodium azide and 50% glycerol, PH7.4
Purify	Affinity purification
Dilution	WB 1:500-1:2000, IHC 1:25-1:100

Background

This gene is a member of the mitochondrial carrier family. The encoded protein contains four EF-hand Ca(2+) binding motifs in the N-terminal domain, and localizes to mitochondria. The protein catalyzes the exchange of aspartate for glutamate and a proton across the inner mitochondrial membrane, and is stimulated by calcium on the external side of the inner mitochondrial membrane. Mutations in this gene result in citrullinemia, type II. Multiple transcript variants encoding different isoforms have been found for this gene.

For Research Use Only

Thank you for your recent purchase.
 If you would like to learn more about antibodies, please visit www.elabscience.com.

**Focus on your research
 Service for life science**

Applications:WB-Western Blot IHC-Immunohistochemistry IF-Immunofluorescence IP-Immunoprecipitation FC-Flow cytometry ChIP-Chromatin Immunoprecipitation Reactivity: H-Human R-Rat M-Mouse Mk-Monkey Dg-Dog Ch-Chicken Hm-Hamster Rb-Rabbit Sh-Sheep Pg-Pig Z-Zebrafish X-Xenopus C-Cow.