

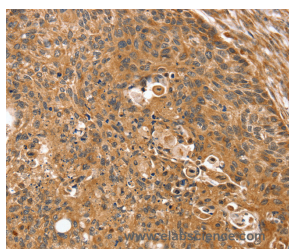
SSX2IP Polyclonal Antibody

Catalog No. E-AB-15414
Storage Store at -20°C. Avoid freeze / thaw cycles.
Applications IHC,ELISA

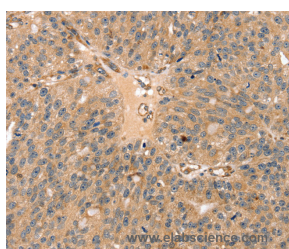
Reactivity H
Host Rabbit
Isotype IgG

Note: Centrifuge before opening to ensure complete recovery of vial contents.

Images



Immunohistochemistry of paraffin-embedded Human esophagus cancer tissue using SSX2IP Polyclonal Antibody at dilution 1:35



Immunohistochemistry of paraffin-embedded Human breast cancer tissue using SSX2IP Polyclonal Antibody at dilution 1:35

Immunogen Information

Immunogen Recombinant protein of human SSX2IP
Gene Accession BC033637
Swissprot Q9Y2D8
Synonyms ADIP

Product Information

Buffer PBS with 0.05% sodium azide and 50% glycerol, PH7.4
Purify Affinity purification
Dilution IHC 1:30-1:150

Background

This gene encodes a protein that binds the cancer-testis antigen Synovial Sarcoma X breakpoint 2 protein. The encoded protein may regulate the activity of Synovial Sarcoma X breakpoint 2 protein in malignant cells. Alternate splicing results in multiple transcript variants. A pseudogene of this gene is found on chromosome 3.

For Research Use Only

Thank you for your recent purchase.
If you would like to learn more about antibodies, please visit www.elabscience.com.

Focus on your research Service for life science

Applications: WB-Western Blot IHC-Immunohistochemistry IF-Immunofluorescence IP-Immunoprecipitation FC-Flow cytometry ChIP-Chromatin Immunoprecipitation Reactivity: H-Human R-Rat M-Mouse Mk-Monkey Dg-Dog Ch-Chicken Hm-Hamster Rb-Rabbit Sh-Sheep Pg-Pig Z-Zebrafish X-Xenopus C-Cow.