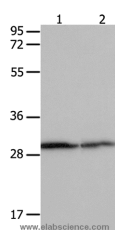


## 14-3-3 beta/alpha Polyclonal Antibody

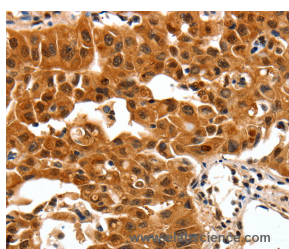
<b>Catalog No.</b>	E-AB-15795	<b>Reactivity</b>	H,M,R
<b>Storage</b>	Store at -20°C. Avoid freeze / thaw cycles.	<b>Host</b>	Rabbit
<b>Applications</b>	WB,IHC,ELISA	<b>Isotype</b>	IgG

**Note:** Centrifuge before opening to ensure complete recovery of vial contents.

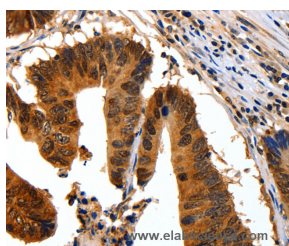
### Images



Western Blot analysis of HeLa cell and Mouse kidney tissue using 14-3-3 beta/alpha Polyclonal Antibody at dilution of 1:550



Immunohistochemistry of paraffin-embedded Human lung cancer using 14-3-3 beta/alpha Polyclonal Antibody at dilution of 1:30



Immunohistochemistry of paraffin-embedded Human colon cancer using 14-3-3 beta/alpha Polyclonal Antibody at dilution of 1:30

### Immunogen Information

<b>Immunogen</b>	Synthetic peptide of human YWHAB
<b>Gene Accession</b>	NP_003395
<b>Swissprot</b>	P31946
<b>Synonyms</b>	HS1,GW128,YWHAA,KCIP-1

### Product Information

<b>Calculated MW</b>	28kDa
<b>Buffer</b>	PBS with 0.05% sodium azide and 50% glycerol, PH7.4
<b>Purify</b>	Affinity purification
<b>Dilution</b>	WB 1:500-1:2000, IHC 1:25-1:100

### Background

This gene encodes a protein belonging to the 14-3-3 family of proteins, members of which mediate signal transduction by binding to phosphoserine-containing proteins. This highly conserved protein family is found in both plants and mammals. The encoded protein has been shown to interact with RAF1 and CDC25 phosphatases, suggesting that it may play a role in linking mitogenic signaling and the cell cycle machinery. Two transcript variants, which encode the same protein, have been identified for this gene.

#### For Research Use Only

Thank you for your recent purchase.  
 If you would like to learn more about antibodies, please visit [www.elabscience.com](http://www.elabscience.com).

**Focus on your research  
 Service for life science**

Applications:WB-Western Blot IHC-Immunohistochemistry IF-Immunofluorescence IP-Immunoprecipitation FC-Flow cytometry ChIP-Chromatin Immunoprecipitation Reactivity: H-Human R-Rat M-Mouse Mk-Monkey Dg-Dog Ch-Chicken Hm-Hamster Rb-Rabbit Sh-Sheep Pg-Pig Z-Zebrafish X-Xenopus C-Cow.