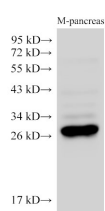


## K1KB3 Polyclonal Antibody

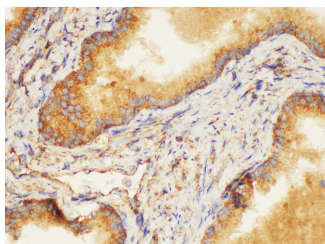
<b>Catalog No.</b>	E-AB-40368	<b>Reactivity</b>	H,M
<b>Storage</b>	Store at -20°C. Avoid freeze / thaw cycles.	<b>Host</b>	Rabbit
<b>Applications</b>	WB,IHC	<b>Isotype</b>	IgG

**Note:** Centrifuge before opening to ensure complete recovery of vial contents.

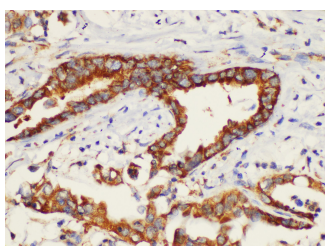
### Images



Western Blot analysis of Mouse pancreas using K1KB3 Polyclonal Antibody at dilution of 1:2500.



Immunohistochemistry of paraffin-embedded Human prostate using K1KB3 Polyclonal Antibody at dilution of 1:200.



Immunohistochemistry of paraffin-embedded Human pancreatic cancer using K1KB3 Polyclonal Antibody at dilution of 1:200.

### Immunogen Information

<b>Immunogen</b>	Recombinant Mouse Kallikrein 1-related peptidase b3 protein
<b>GeneID</b>	18050
<b>Swissprot</b>	P00756
<b>Synonyms</b>	Gamma-NGF, Glandular kallikrein K3, mGK-3, Tissue kallikrein-3

### Product Information

<b>Calculated MW</b>	28 kDa
<b>Observed MW</b>	28 kDa
<b>Buffer</b>	PBS with 0.05% Proclin300, 50% glycerol, pH7.3.
<b>Purify</b>	Antigen Affinity Purification
<b>Dilution</b>	WB 1:2500-1:4000 IHC 1:100-1:300

### Background

KLK1B3, also known as 7S nerve growth factor gamma chain. 7S nerve growth factor is composed of two alpha chains, a beta dimer composed of identical chains, and two gamma chains. The gamma chain is an arginine-specific protease; it may also have plasminogen activator activity, as well as mitogenic activity for chick embryo fibroblasts.

#### For Research Use Only

Thank you for your recent purchase.  
 If you would like to learn more about antibodies, please visit [www.elabscience.com](http://www.elabscience.com).

**Focus on your research**  
**Service for life science**

Applications: WB-Western Blot IHC-Immunohistochemistry IF-Immunofluorescence IP-Immunoprecipitation FC-Flow cytometry ChIP-Chromatin Immunoprecipitation Reactivity: H-Human R-Rat M-Mouse Mk-Monkey Dg-Dog Ch-Chicken Hm-Hamster Rb-Rabbit Sh-Sheep Pg-Pig Z-Zebrafish X-Xenopus C-Cow.