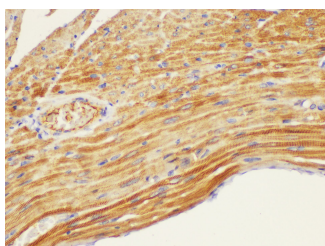


CD146 Polyclonal Antibody

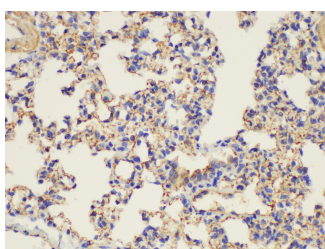
Catalog No.	E-AB-40373	Reactivity	M,R
Storage	Store at -20°C. Avoid freeze / thaw cycles.	Host	Rabbit
Applications	IHC	Isotype	IgG

Note: Centrifuge before opening to ensure complete recovery of vial contents.

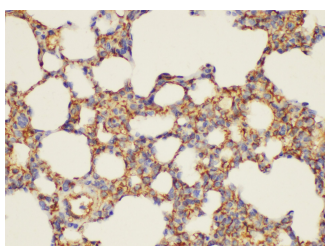
Images



Immunohistochemistry of paraffin-embedded Mouse heart using CD146 Polyclonal Antibody at dilution of 1:200.



Immunohistochemistry of paraffin-embedded Mouse lung using CD146 Polyclonal Antibody at dilution of 1:200.



Immunohistochemistry of paraffin-embedded Rat lung using CD146 Polyclonal Antibody at dilution of 1:200.

Immunogen Information

Immunogen	Recombinant Rat Cell surface glycoprotein MUC18 protein
GeneID	78967
Swissprot	Q9EPF2
Synonyms	CD 146,CD146,McAm,MeICAM,MUC18,MUC18,MUC18

Product Information

Buffer	PBS with 0.05% Proclin300, 50% glycerol, pH7.3.
Purify	Antigen Affinity Purification
Dilution	IHC 1:100-1:300

Background

CD146, also known as melanoma cell adhesion molecule (MCAM) or MUC18, originally identified as a biomarker of melanoma progression, is a transmembrane glycoprotein belonging to the immunoglobulin (Ig) superfamily. Structurally, it consists of five Ig domains, a transmembrane domain, and a cytoplasmic region. In normal adult tissue, CD146 is primarily expressed by vascular endothelium and smooth muscle. CD146 is a key cell adhesion protein in vascular endothelial cell activity and angiogenesis, and has been used as a marker of circulating endothelial cells (CECs).

For Research Use Only

Thank you for your recent purchase.
 If you would like to learn more about antibodies, please visit www.elabscience.com.

**Focus on your research
 Service for life science**

Applications: WB-Western Blot IHC-Immunohistochemistry IF-Immunofluorescence IP-Immunoprecipitation FC-Flow cytometry ChIP-Chromatin Immunoprecipitation Reactivity: H-Human R-Rat M-Mouse Mk-Monkey Dg-Dog Ch-Chicken Hm-Hamster Rb-Rabbit Sh-Sheep Pg-Pig Z-Zebrafish X-Xenopus C-Cow.