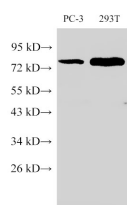


## PSMA Polyclonal Antibody

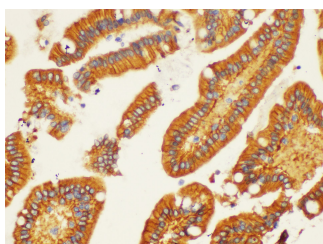
<b>Catalog No.</b>	E-AB-40376	<b>Reactivity</b>	H,M,R
<b>Storage</b>	Store at -20°C. Avoid freeze / thaw cycles.	<b>Host</b>	Rabbit
<b>Applications</b>	WB,IHC	<b>Isotype</b>	IgG

**Note:** Centrifuge before opening to ensure complete recovery of vial contents.

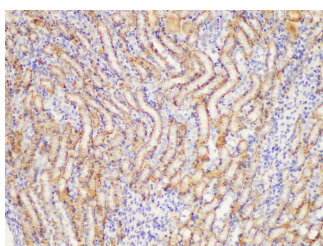
### Images



Western Blot analysis of 1)PC-3, 2)293T using PSMA Polyclonal Antibody at dilution of 1:500.



Immunohistochemistry of paraffin-embedded Human duodenum using PSMA Polyclonal Antibody at dilution of 1:200.



Immunohistochemistry of paraffin-embedded Mouse kidney using PSMA Polyclonal Antibody at dilution of 1:200.

### Immunogen Information

<b>Immunogen</b>	Recombinant Human Glutamate carboxypeptidase 2 protein
<b>GeneID</b>	2346
<b>Swissprot</b>	Q04609
<b>Synonyms</b>	Glutamate carboxypeptidase 2 ,Cell growth-inhibiting gene 27 protein,Folate hydrolase 1,Folylpoly-gamma-glutamate carboxypeptidase,FGCP,Glutamate carboxypeptidase II,GCPII, Membrane glutamate carboxypeptidase,mGCP,N-acetylated-alpha-linked acidic dipeptidase I,NAALADase I,Prostate-specific membrane antigen,PSM,PSMA,Pteroylpoly-gamma-glutamate carboxypeptidase

### Product Information

<b>Calculated MW</b>	9,12,50,78,80,82,84 kDa
<b>Observed MW</b>	80 kDa
<b>Buffer</b>	PBS with 0.05% Proclin300, 50% glycerol, pH7.3.
<b>Purify</b>	Antigen Affinity Purification
<b>Dilution</b>	WB 1:500-1:1000 IHC 1:100-1:300

### Background

Prostate-specific membrane antigen (PSMA) is expressed in normal and malignant prostatic epithelium and in a subset of non-prostatic tissues. In prostate cancer, PSMA expression has been shown to correlate with disease progression, with highest levels expressed in hormone-refractory and metastatic disease. The cellular localization of PSMA is cytoplasmic and/or membranous.

#### For Research Use Only

Thank you for your recent purchase.  
 If you would like to learn more about antibodies, please visit [www.elabscience.com](http://www.elabscience.com).

**Focus on your research  
 Service for life science**

Applications: WB-Western Blot IHC-Immunohistochemistry IF-Immunofluorescence IP-Immunoprecipitation FC-Flow cytometry ChIP-Chromatin Immunoprecipitation Reactivity: H-Human R-Rat M-Mouse Mk-Monkey Dg-Dog Ch-Chicken Hm-Hamster Rb-Rabbit Sh-Sheep Pg-Pig Z-Zebrafish X-Xenopus C-Cow.